

EN

# PRODUCT CATALOG

BIKE COMPUTERS / LIGHTING SYSTEMS / SPORT WATCHES

## 2014/15



 **SIGMA**<sup>®</sup>  
GERMANY

[www.sigmasport.com](http://www.sigmasport.com)



# CONTENTS



## **4 SIGMA SPORT**

- 4 New products
- 6 Quality and service
- 7 Sponsored by SIGMA

## **8 BIKE COMPUTERS**

### **8 TOPLINE**

- 18 Summary of functions TOPLINE
- 20 Accessories TOPLINE
- 22 ROX**
- 32 Summary of functions ROX
- 36 Accessories ROX
- 38 Service Tools

## **40 LIGHTING SYSTEMS**

- 40 LIGHTING SYSTEMS**
- 42 FRONT LIGHTS**
- 46 TAIL LIGHTS**
- 51 LIGHTING SETS**
- 52 POWER LIGHTS**
- 56 SAFETY LIGHTS**
- 62 SPORT LIGHTS**
- 64 Summary of functions
- 66 Accessories

## **68 SPORT WATCHES**

- 68 SPORT WATCHES**
- 69 STOPWATCH**
- 70 HEART RATE MONITORS**
- 76 HEART RATE MONITORS DIGICODE**
- 82 RUNNING COMPUTERS**
- 89 SMART DEVICES**
- 90 Summary of functions
- 91 Support
- 92 Accessories

## **93 POCKET TOOLS**

## **94 SIGMA DATA CENTER**

## **98 SIGMA ONLINE**

# NEW PRODUCTS

## BIKE COMPUTERS

SIGMA SPORT is expanding its successful TOPLINE series. The wireless entry-level model, the **BC 8.12 ATS**, is now also available in **black**. In addition, both models have been given a **new speed transmitter**. Thanks to the **compact design** and **large, flexible rubber pad**, which sits on a wide base and can also **be attached using cable ties**, the ATS speed bracket fits on forks of any shape.

In response to multiple customer requests, SIGMA SPORT is now also offering the only TOPLINE COMPUTER with an **altitude measurement function**, the **BC 14.12 ALTI**, as a **wireless STS model**. With a completely black design, the difference between the new wireless altimeter and the wired model is also visibly evident.

With six bike functions, a practical display backlight, and five altitude functions, this device offers the lowest cost introduction to altitude measurement in the SIGMA SPORT STS range.

## LIGHTING SYSTEMS

Safe, legally approved lighting is a must-have for all cyclists. SIGMA SPORT has been developing battery-operated lights that comply with the German Road Traffic Licensing Regulations (StVZO) since 1997. The aim is to create a symbiosis of customer needs, usage-related requirements and technical possibilities.

This has been perfectly achieved with the new **SPORTSTER**. The chic LED front light with a **micro-USB re-charging function** and an **integrated lithium-ion rechargeable battery** has a K-number and is therefore fully StVZO approved.

The handy little **SPORTSTER** emits a bright **30 LUX** beam for up to seven hours in standard mode and is an indispensable accessory for everyday city cyclists and amateurs.

A further new product is the **BUSTER 200**. Whether on city streets or country lanes, the **200 lumen** offer outstanding safety at all speeds. Thanks to the **screw-bracket** with a coin slot, the practical little bracket can also be quickly attached to oversize handlebars. A highly **flexible silicone bracket** that fits to all handlebar shapes is optionally available.

## SPORT WATCHES

SIGMA SPORT's sport watches range has been expanded to include not one but two new products: the **PC 26.14** and the **RC MOVE**.

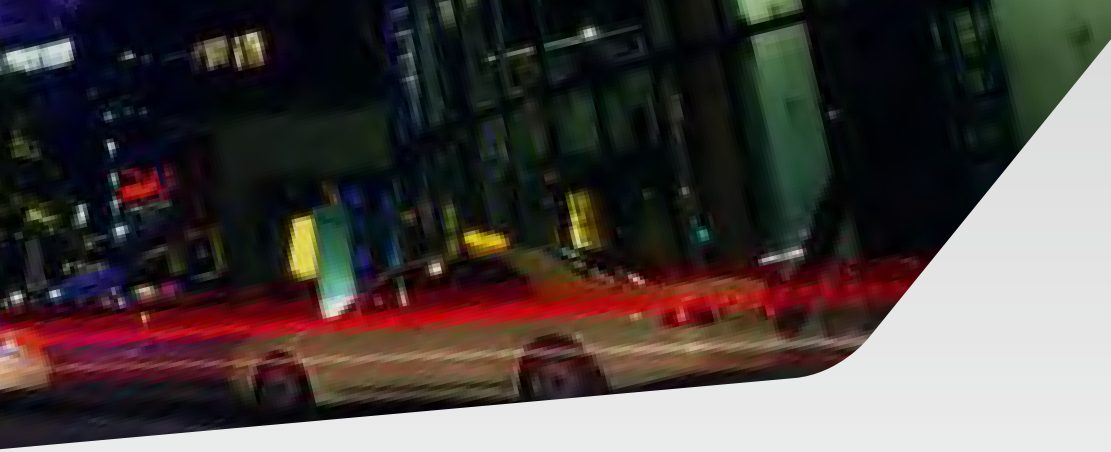
**PC 26.14:** The chic heart rate monitor for everyday use is easy to wear for any sporting activity. Available in **black**, **white** and **blue**, it comes with a comfortable and supple **silicone wrist strap**. The scratchproof mineral glass is not only practical but also adds an extra hint of class to this stylish piece of sports jewellery.

**RC MOVE:** In launching the RC MOVE, SIGMA SPORT is offering a heart rate monitor with twice the benefits: As a heart rate monitor, it is the perfect training companion, while in conjunction with an **iPhone** and the **SIGMA MOVE app**, it becomes a smart training partner. The values on the **app**, such as the speed or distance, are simultaneously displayed on the watch, announced by **voice control** after each lap, and can be shared via **Facebook** or **Twitter** at the end of each training session.

A neat feature: **playlist music** can be directly controlled on the watch. Whether in black or white: **Move to run smarter**







BC 8.12 ATS BLACK



BC 14.12 STS ALTI



SPORTSTER



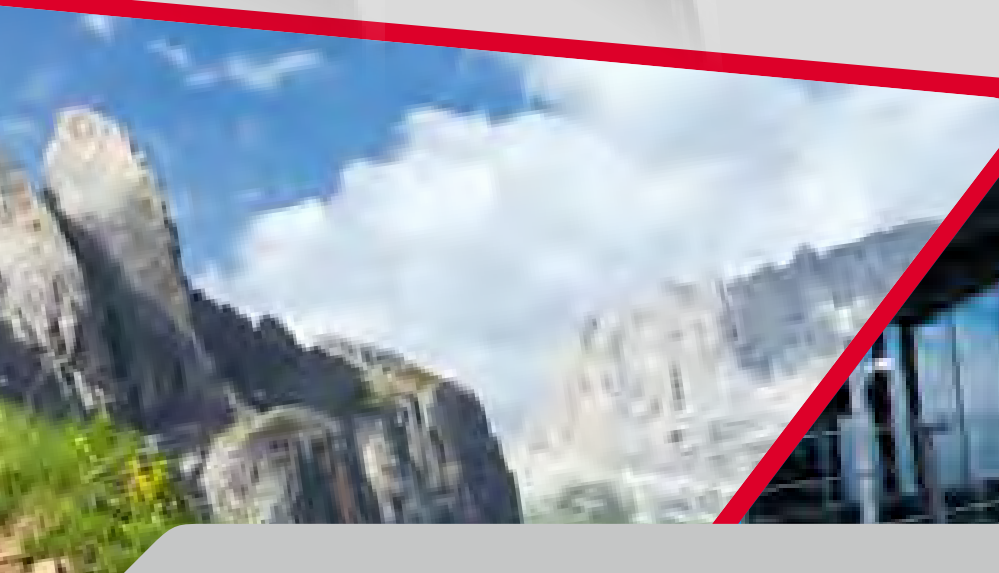
BUSTER 200



PC 26.14



RC MOVE





# QUALITY AND SERVICE

For us, certified diligence and the friendly and professional handling of customer inquiries at all times are simply a matter of course and guarantee the growing success of the global sports electronics company SIGMA SPORT.

The development of a new product takes several years and involves many hours of testing with different test scenarios. Whether in the laboratory with incessant rain, through the use of cold shocks or constant vibrations, or in practical tests attached to the product manager and SIGMA employees' bikes or arms. Mass production only begins once all the tests have been passed.

Finally, all products are tested at random in Neustadt, packaged by hand, and shipped to customers all around the world.

Customer questions can be answered by a highly skilled service team, which can also quickly involve the responsible product manager if necessary thanks to the short lines of communication at SIGMA.

Service also means being prepared for almost all the questions in our 'frequently asked questions', configuring our devices in as user-friendly a manner as possible, and providing users and retailers with further support by means of videos and the SIGMA YouTube channel.



SPONSORED BY SIGMA

BIKE COMPUTERS

# *TOPLINE 2012*

*SIGMA BIKE COMPUTERS*



**BC 5.12**

**FEATURES**

**General functions**

- Full text display with seven available languages
- Scan mode on/off
- Automatic start/stop
- Watertight
- Tool free install
- UFSB-compatible
- Service interval programmable via UFSB

**Bike functions**

- Current speed
- Trip distance
- Total distance

**Time functions**

- Trip time
- Clock

**WIRED**

**+ SPEED**

**PC+MAC**

**FUNCTIONS**

# FULL TEXT DISPLAY

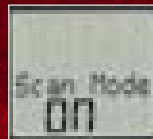
The classic odometer for all. Quick to attach, simple to set, easy to understand thanks to the full text display, and simple to operate at the push of a button. Three bike functions and two time functions packed into an attractive, modern design.



**Ref. No. 05120**



**Optimized operating concept**  
Easy to set the computer and change the function display



**Autoscan on/off**  
Automatic run through the functions. Mode can only be switched on and off in the settings menu





FUNCTIONS

# AVERAGE SPEED

A wired or wireless beginner model with comprehensive bike functions. Further to the current speed, the trip distance, and the total distance, the BC 8.12 / ATS also displays the maximum and average speeds.

**NEW!**



#### Service interval

The number of kilometers until the next service inspection can be programmed by means of the UFSB



#### Average speed

Provides information about the average speed during the trip



#### New speed transmitter

Compact design and flexible attachment thanks to a large rubber pad, which sits on a wide base and can now also be attached using cable ties

## BC 8.12 / **ATS** BLACK / WHITE

### FEATURES

#### General functions

- Full text display with seven available languages
- Automatic start / stop\*
- Watertight
- Tool free install
- UFSB-compatible
- Service interval programmable via UFSB

#### Bike functions

- Current speed
- Average speed
- Maximum speed
- Trip distance
- Total distance\*\*

#### Time functions

- Trip time
- Total trip time\*\*
- Clock

\* BC 8.12 wired only  
\*\* Not shown while riding

**NEW!**

**ATS**  
**WIRELESS**

+ SPEED

PC+MAC<sup>ready</sup>



Ref. No. 08124

**ATS**  
**WIRELESS**

+ SPEED

PC+MAC<sup>ready</sup>



Ref. No. 08130

**WIRED**

+ SPEED

PC+MAC<sup>ready</sup>



Ref. No. 08120

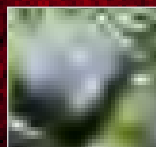
#### BC 8.12 ATS

The complete package includes:  
Speed transmitter

# FUEL SAVING

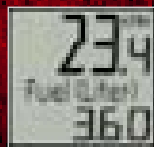
The modern bike computer with 12 functions for all everyday cyclists. Every kilometer cycled is converted into fuel saved. Comprehensive general, bike, time, and temperature functions round off this marvelous piece of equipment.

## FUNCTIONS



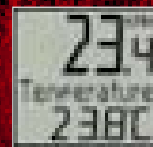
### Integrated storage chip

Settings and total values are saved during a battery change



### Fuel saving

Displays how many liters of fuel your own car would have consumed over the same distance



### Temperature

Current temperature can be read from the display



### Battery status

Timely battery change reminder

## BC 12.12 / STS

### FEATURES

#### General functions

- Full text display with seven available languages
- Backup function (storage chip)
- Low battery indicator (receiver/transmitter)
- Automatic start / stop
- Watertight
- Tool free install
- UFSB-compatible
- Service interval programmable via UFSB

#### Bike functions

- Current speed
- Average speed
- Current/Average speed comparison
- Maximum speed
- Trip distance
- Total distance\*
- Separate trip section counter with manual stop/start

#### Time functions

- Trip time
- Total ride time\*
- Separate time section counter with manual stop/start
- Clock

#### Fuel consumption functions

- Trip fuel saving
- Total fuel saving\*

#### Temperature function

- Current temperature

\* Not shown while riding

STS  
WIRELESS

+ SPEED

PG+MAC READY

WIRED

+ SPEED

PG+MAC READY



Ref. No. 02130



Ref. No. 02120



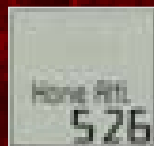
#### BC 12.12 STS

The complete package includes:  
Speed transmitter

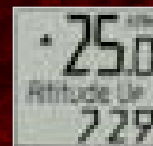
FUNCTIONS

# ALTITUDE

The basic model in the SIGMA SPORT Topline range now comes with five altitude measurement functions. A must-have for anyone who wants to reach great heights while keeping an eye on the classic bike functions. **Now also available as a wireless model.**



**Start altitude**  
Defined, fixed start altitude programmable and easy to view



**Trip altitude**  
Indicates the altitude difference covered during a trip



**Light**  
Backlight display. Once activated, can be switched on at the push of a button for optimum legibility – even after nightfall



# BC 14.12 ALTI / STS ALTI

## FEATURES

### General functions

- Full text display with seven available languages
- Backup function (storage chip)
- Low battery indicator (receiver/transmitter)
- Backlight
- Automatic start / stop
- Watertight
- Tool free install
- UFSB-compatible
- Service interval programmable via UFSB

### Bike functions

- Current speed
- Average speed
- Current/Average speed comparison
- Maximum speed
- Trip distance
- Total distance\*

### Time functions

- Trip time
- Total trip time\*
- Clock

### Altitude measurement functions

- Current altitude
- Start altitude
- Day's climb uphill
- Day's maximum altitude
- Total altitude uphill\*

### Temperature function

- Current temperature

\* Not shown while riding

**NEW!**

**STS**  
**WIRELESS**

+ SPEED

+ ALTITUDE

PG+MAG<sup>READY</sup>

**WIRED**

+ SPEED

+ ALTITUDE

PG+MAG<sup>READY</sup>



Ref. No. 04160



Ref. No. 04150



### BC 14.12 STS ALTI

The complete package includes:  
Speed transmitter



# SPEED+ CADENCE

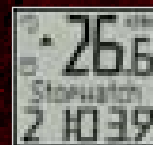
The professional among the Topline 2012 range. Whether with one bike or two, the BC 16.12 has comprehensive bike and time functions and offers the option of cadence measurement.

FUNCTIONS



#### **Bike 2 detection**

Two configurable wheel sizes that are automatically detected



#### **Stopwatch**

Manual time measurement possible irrespective of the total ride time



#### **Countdown timer**

Definition of individual time periods that can be used for interval training



#### **Trip section kilometers and time with manual start/stop**

Trip sections of a tour can be individually manually stopped

# BC 16.12 / STS / CAD

## FEATURES

### General functions

- Full text display with seven available languages
- 2 adjustable wheel sizes
- Automatic recognition of second bike
- Backup function (storage chip)
- Low battery indicator, receiver / transmitter
- Backlight
- Automatic start / stop
- Watertight
- Tool free install
- UFSB-compatible
- Service interval programmable via UFSB

### Bike functions

- Current speed
- Average speed
- Current/Average speed comparison
- Maximum speed
- Trip distance
- Total distance bike 1 / 2 / 1+2\*
- Separate trip section counter with manual stop/start

### Time functions

- Trip time
- Total trip time bike 1 / 2 / 1+2\*
- Separate time section counter with manual stop/start
- Clock
- Countdown timer
- Stopwatch

### Cadence functions

- Current cadence (optional BC 16.12 / STS)
- Average cadence (optional BC 16.12 / STS)

### Temperature function

- Current temperature

\* Not shown while riding

STS  
WIRELESS



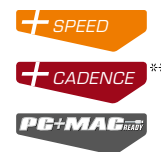
Ref. No. 06131



#### BC 16.12 STS CAD

The complete package includes:  
Speed transmitter, Cadence transmitter

STS  
WIRELESS



Ref. No. 06130

WIRED



Ref. No. 06120

#### BC 16.12 STS

The complete package includes:  
Speed transmitter

\*\* optional

	BC 5.12	BC 8.12	BC 12.12	BC 14.12 ALTI	BC 16.12	BC 8.12 ATS B/W	BC 12.12 STS	BC 14.12 STS ALTI	BC 16.12 STS	BC 16.12 STS CAD
<b>Bike functions</b>										
- Current speed										
- Average speed										
- Maximum speed										
- Current/Average speed comparison										
- Trip distance										
- Trip time										
- Separate trip with manual stop /start										
<b>Cadence functions</b>										
- Current cadence				opt.			opt.			
- Average cadence				opt.			opt.			
<b>Time functions</b>										
- Time (12 / 24 h)										
- Stopwatch										
- Countdown Timer										
- Separate time section counter with manual stop/start										
<b>Consumption functions</b>										
- Trip fuel saving in liters										
- Total fuel saving in liters										
<b>Altitude measurement functions</b>										
- Current altitude										
- Day's climb uphill										
- Day's maximum altitude										
- Calibration via current altitude										
- Calibration via home altitude										
- Programmable home altitude										
<b>Total values</b>										
- Total distance										
- Total distance bike 1/bike 2/bike 1+2										
- Total ride time										
- Total ride time bike 1/bike 2/bike 1+2										
- Total altitude difference uphill										
<b>Temperature functions</b>										
- Current temperature										
<b>General functions</b>										
- Service interval										
- Available languages (number)	7	7	7	7	7	7	7	7	7	7
- 2 adjustable wheel sizes										
- Automatic recognition of bike 2										
- Automatic start/stop										
- Backlight										
- Low battery indicator (receiver)										
- Low battery indicator (transmitter)										
- Adjustable contrast										
- Switch between kmh/mph mode										
- Scan mode can be switched on/off										
- UFSB-compatible										
- Device settings via UFSB	opt.	opt.	opt.	opt.	opt.	opt.	opt.	opt.	opt.	opt.
<b>Several functions</b>										
- Battery type receiver CR 2032										
- Battery type transmitter CR 2032										
- Battery life* (years)	3	3	1.5	1.5	1.5	2	1	1	1	1
- Watertight										
- Mount for handlebars and stem										
- Integrated storage chip for data backup										

\* With high quality batteries and 1 hour use per day or 7300 km a year at 20 km/h average speed (batteries available from SIGMA SPORT®)





**00104**

UNIVERSAL FAST  
SETTING BOX  
incl. 2 AA Batteries

**00110**

COMPUTER DIAGNOSTIC  
CENTER  
incl. 9 V Block Battery

**00229**

DEMOBOX  
TOPLINE 2012  
Equipped  
Incl. function overview

**00342**

LITHIUM BATTERIE  
CR 2032

For BC 5.12/8.12/8.12 ATS/12.12/  
12.12 STS/14.12/16.12/16.12 STS,  
all chest belt and transmitter

**00349**

LITHIUM BATTERIE  
CR 2032

10 per Blister  
For BC 5.12/8.12/8.12 ATS/12.12/  
12.12 STS/14.12/16.12/16.12 STS,  
all chest belt and transmitter

**00120**

DOCKING STATION  
TOPLINE 2012  
For all TOPLINE 2009/2012  
bike computers

**00390**

MAGNET KIT  
Magnet and sleeve

**00430**

TOOL-FREE  
POWER MAGNET 2009

**00424**

CABLE FOR UNIVERSAL  
BRACKET  
Only for the universal bracket  
Ref. No. 00426

**00426**

UNIVERSAL BRACKET  
2032  
Without cable

**00428**

UNIVERSAL BRACKET  
2032  
With cable

**00120**

DOCKING STATION  
TOPLINE 2012  
For all TOPLINE 2009/2012  
bike computers

**00390**

MAGNET KIT  
Magnet and sleeve

**00430**

TOOL-FREE  
POWER MAGNET 2009

**00414**

CADENCE  
POWER MAGNET

**00424**

CABLE FOR UNIVERSAL  
BRACKET  
Only for the universal bracket  
Ref. No. 00426

**00425**

CADENCE SENSOR KIT  
UNIVERSAL BRACKET  
Only for the universal bracket  
Ref. No. 00426/00428

**00426**

UNIVERSAL BRACKET  
2032  
Without cable

**00428**

UNIVERSAL BRACKET  
2032  
With cable

**00120**

DOCKING STATION  
TOPLINE 2012  
For all TOPLINE 2009/2012  
bike computers

**00390**

MAGNET KIT  
Magnet and sleeve

**00430**

TOOL-FREE  
POWER MAGNET 2009

**00408**

ATS/STS BRACKET  
2032

**00447**

ATS SPEED TRANSMITTER  
for BC 8.12 ATS

**00120**

DOCKING STATION  
TOPLINE 2012  
For all TOPLINE 2009/2012  
bike computers

**00390**

MAGNET KIT  
Magnet and sleeve

**00430**

TOOL-FREE  
POWER MAGNET 2009

**00408**

ATS/STS BRACKET  
2032

**00439**

STS SPEED  
TRANSMITTER  
For all STS bike computers



**00120**

**DOCKING STATION  
TOPLINE 2012**

For all TOPLINE 2009/2012  
bike computers



**00390**

**MAGNET KIT**

Magnet and sleeve



**00430**

**TOOL-FREE**

**POWER MAGNET 2009**



**00414**

**CADENCE**

**POWER MAGNET**



**20520**

**CADENCE**

**MAGNET PEDAL INSERT**



**00408**

**ATS/STS BRACKET  
2032**



**00439**

**STS SPEED**

**TRANSMITTER**

For all STS bike computers



**00440**

**STS SPEED**

**TRANSMITTER**

**COMPLETE KIT**

For 2nd bike



**00441**

**STS CADENCE**

**TRANSMITTER**

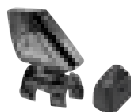


**00442**

**STS CADENCE**

**TRANSMITTER**

Complete kit



**00443**

**STS BIKE 2**

**COMPLETE KIT**

To retrofit the 2nd bike



# ACCESSORIES

A full-page background image of a mountain biker in a black and white jersey riding down a dirt trail. A large, semi-transparent red hexagon is superimposed over the image, with the word 'ROX' in white, italicized, sans-serif font centered within it.

# *ROX*

## OUR PROFESSIONALS

For all those who want more than just a bike computer, SIGMA SPORT has developed the **ROX series**. Whether the **ROX 5.0**, which focuses on heart rate functions, the **ROX 6.0** with an additional altitude measurement, or the **ROX 10.0** with **GPS** and **ANT+** compatibility, all athletes with professional demands will find the perfect equipment among our top models.

### ROX 5.0

The ROX 5.0 is the ideal everyday companion for ambitious cyclists in training. The stylish bike computer displays not only the speed but also the heart rate and cadence values, and can even be used as a running computer.

### ROX 6.0 CAD

A training companion for all occasions and the mountains: this is what the ROX 6.0 CAD offers. The bike computer with comprehensive altitude measurement functions also displays the speed, heart rate, and cadence values.

### ROX 10.0 GPS

For professionals and those who train like them, the ROX 10.0 GPS is a must-have. SIGMA SPORT's first GPS bike computer impresses thanks to its ANT+ compatibility, GPS receiver, and route navigation with that extra something. The PC interface of the ROX 10.0 GPS and comprehensive DATA CENTER evaluation and planning modules with map connection provide everything you need when analyzing and planning training sessions and trips.

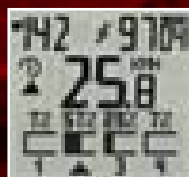


# ***ROX 5.0***

*YOUR TRAINING PARTNER*

***INTENSITY ZONES***





The ROX series entry-level model and successor to the successful BC 1909 HR enables users to train using four standardized or customized intensity zones. Training zones allow you to set short term goals for individual training sessions. Intensity zones allow for long term goal setting and in depth training analysis.



Ref. No. 05170



**The complete package includes:**  
Speed transmitter, cadence transmitter, R1 STS Comfortex+ chest strap, handlebar mount, wristband

## FEATURES

**STs**

**SPEED**  
DIGITAL  
WIRELESS

**CAD**  
DIGITAL  
WIRELESS

**HRM**  
DIGITAL  
WIRELESS

**LAP**  
COUNT

**DATA**  
LOG

**MULTI**  
SPORT

**PC**  
**MAC**  
READY

- Speed
- Cadence
- Heart rate
- Temperature
- PC compatibility
- 25-hour LOG capacity
- Lap counter (99 laps)
- 10-second recording interval
- Running mode
- For complete details, see the Function Chart beginning on pg. 32

**TRAINING**  
**DATA**  
ANALYSIS

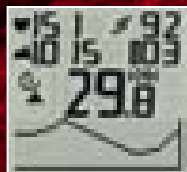


**Docking station**  
**Ref. No. 00120**  
sold separately

# ROX 6.0/CAD

THE MOUNTAIN SPECIALIST

## ALTITUDE **IAc**




Thanks to seven altitude measurement functions, barometric altitude determination, and intelligent altitude calibration (IAC), the ROX 6.0 and successor to the BC 2209 MHR is the ideal companion for mountain lovers with high aims.



Ref. No. **06170** RDX 6.0 (cadence transmitter optional)  
**06171** RDX 6.0 CAD

## FEATURES



- Speed
- Cadence
- Heart rate
- Altitude 
- Temperature
- PC compatibility
- 19-hour LOG capacity
- Lap counter (99 laps)
- 10-second recording interval
- Hiking mode
- For complete details, see the Function Chart beginning on pg. 32



**Docking station**  
**Ref. No. 00120**  
 sold separately

### The complete package includes:

Speed transmitter, cadence transmitter\*, R1 STS Comfortex+ chest strap, handlebar mount, wristband

\*ROX 6.0 CAD only

# ROX 10.0 GPS



Ref. No. **01000** ROX 10.0 GPS BLACK SET  
**01002** ROX 10.0 GPS BLACK BASIC



# THE GUIDE

The ROX 10.0 GPS comes equipped with a GPS receiver, track navigation, and ANT+ wireless transmission technology.

Track Navigation allows you to import a previously ridden track and directly compete against it. The GPS receiver is continuously monitoring your location and updating your progress. A barometer measures the altitude and temperature.

ANT+-based heart rate, speed, and cadence transmitters can be added for additional ride data. Compatible with all ANT+ based power meters.

With the included DATA CENTER evaluation, planning, and mapping software the ROX 10.0 GPS is the perfect companion for any professional athlete in training.



Ref. No. 01001 ROX 10.0 GPS WHITE SET  
01003 ROX 10.0 GPS WHITE BASIC



## Included in the set version:

ANT+ speed transmitter, ANT+ cadence transmitter, R1 ANT+ COMFORTX+ chest strap



## FEATURES

- GPS track navigation
- Speed
- Cadence
- Heart rate
- Digital three-axis compass
- Altitude **AS+**
- Elevation profile in graph format
- Gradient and rate of ascent
- Temperature
- ANT+ transmission technology
- Power compatible (ANT+), or calculates watts w/o power meter
- Lap Counter
- Digital Compass
- 249-hour LOG capacity
- MICRO USB connection
- Includes DATA CENTER with mapping functionality
- See the table on p. 32 et seq. for an overview of all the functions



## Included with all versions:

SIGMA DATA CENTER, MICRO USB cable

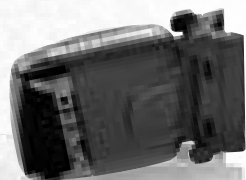




# TRANSMISSION TECHNOLOGY

The use of wireless, digital ANT+ transmission technology is common in bicycle electronics. All ANT+-compatible devices can communicate with one another as long as they have been 'paired'. The most common power meters are ANT+ based.

The SIGMA SPORT ROX 10.0 GPS heart rate, speed, and cadence transmitters also transmit their data using ANT+. Current values are transmitted every second. Users can easily change the batteries themselves.



SPEED



CADENCE

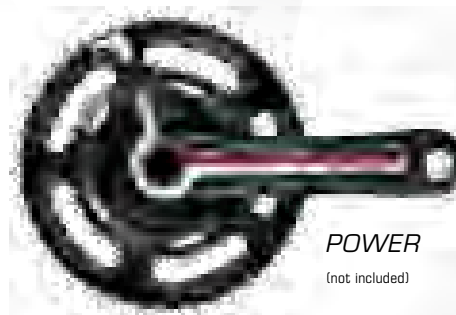


HEART RATE



## COMPATIBLE WITH POWER METERS

In addition to the tried-and-tested integrated power calculation, power meters with ANT+ transmission technology can be coupled with the ROX 10.0 GPS. For further information about compatible devices, please visit [www.sigma-rox.com](http://www.sigma-rox.com).



POWER  
(not included)

# GPS-TRACK-NAVIGATION



## DATA CENTER WITH MAP MATERIAL

The USB cable provided can be used to connect the ROX 10.0 GPS to a PC or Mac. Trip evaluations and route planning occur in DATA CENTER with the map connection.

[www.sigma-data-center.com](http://www.sigma-data-center.com)

**GPS**  
TRACK  
NAVI

The ROX 10.0 GPS's route navigation function can be used to follow routes that have been previously loaded or already saved. The five navigation functions and graph-based presentation of the track progress on the display offer excellent track guidance.



## Track found message

The 'track found' message appears on the display when the user rides along a previously loaded track.



## Track view

The loaded track is shown on the display in track mode together with the distance already traveled.



## Off-track alarm

Visual and audible alarms are triggered when the rider leaves the active track.



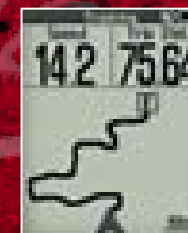
## Waypoint alarm

The waypoint alarm reminds riders that they have reached a point of interest that was marked in advance.



## Wrong direction alarm

A visual and audible alarm triggers if the rider is not following the track in the direction shown.



## Same track back

When activated, the rider can reverse the direction of the recorded track to reliably guide them back to the starting point.

For more information about the ROX 10.0 GPS, please visit [www.sigma-rox.com](http://www.sigma-rox.com)

	ROX 5.0	ROX 6.0 / CAD	ROX 10.0 GPS WITHOUT TRANSMITTER	ROX 10.0 GPS WITH TRANSMITTER
<b>Bike functions</b>				
- Current speed				
- Average speed				
- Maximum speed				
- Current vs. average speed comparison				
- Distance				
- Current expansion				
- Average expansion				
- Current cadence		opt.	opt.	
- Average cadence		opt.	opt.	
- Maximum cadence			opt.	
<b>Heart rate functions</b>				
- Current heart rate			opt.	
- Average heart rate			opt.	
- Maximum heart rate			opt.	
- HR as a % of HR max			opt.	
- Average % of HR max			opt.	
- Kcal			opt.	
- One target zone			opt.	
- Four intensity zones			opt.	
- Automatic calculation of the intensity/ target and HR zone(s)			opt.	
- Audible zone alarm				
- Visual zone alarm				

	ROX 5.0	ROX 6.0 / CAD	ROX 10.0 GPS WITHOUT TRANSMITTER	ROX 10.0 GPS WITH TRANSMITTER
<b>Time functions</b>				
- Training time				
- Trip time				
- Time (12/24 h)				
- Date				
- Countdown timer				
- Stopwatch				
<b>Power functions</b>				
- Current power			opt.	Formula/ANT+
- Three-second average power			opt.	Formula/ANT+
- 30-second average power			opt.	Formula/ANT+
- Average power			opt.	Formula/ANT+
- Maximum power			opt.	Formula/ANT+
- Work in kJ			opt.	Formula/ANT+
- Current power in watt/kg			opt.	Formula/ANT+
- One power target zone			opt.	Formula/ANT+
<b>Temperature functions</b>				
- Current temperature				
- Minimum temperature				
- Maximum temperature				
<b>Altitude measurement functions</b>				
- Current altitude				
- Gradient (%)				
- Current incline rate				
- Elevation profile for the next 3 mi				
- Elevation profile for the last 3 mi				

# OVERVIEW OF FUNCTIONS

	ROX 5.0	ROX 6.0 / CAD	ROX 10.0 GPS WITHOUT TRANSMITTER	ROX 10.0 GPS WITH TRANSMITTER
<b>Uphill functions</b>				
- Altitude gain				
- Maximum altitude				
- Distance uphill				
- Trip time uphill				
- Average speed uphill				
- Maximum rate of ascent				
- Average incline uphill				
- Maximum incline uphill				
- Average expansion uphill			opt.	
<b>Downhill functions</b>				
- Altitude loss				
- Distance downhill				
- Trip time downhill				
- Average speed downhill				
- Maximum rate of descent				
- Average slope downhill				
- Maximum slope downhill				
- Average expansion downhill			opt.	
<b>Status functions</b>				
- Low battery indicator in %				
- GPS accuracy				
- GPS signal strength				
<b>Navigation functions</b>				
- Time to destination				
- Time at destination				
- Distance to destination				
- Direction				
- Mini track navigation				

	ROX 5.0	ROX 6.0 / CAD	ROX 10.0 GPS WITHOUT TRANSMITTER	ROX 10.0 GPS WITH TRANSMITTER
<b>Favorite functions</b>				
- Favorites A				
- Favorites B				
<b>Lap functions</b>				
- Maximum no. of laps	99	99	784	784
- Current no. of laps				
- Lap time				
- Time since start				
- Lap distance				
- Distance since start				
- Average speed per lap				
- Maximum speed per lap				
- Average HR per lap				
- Maximum HR per lap				
- Kcal per lap				
- Average cadence per lap		opt.	opt.	
- Maximum cadence per lap			opt.	
- Average power per lap			opt.	
- Maximum power per lap			opt.	
- Average altitude per lap				
- Maximum altitude per lap				
- Altitude gain per lap				
- Altitude loss per lap				
- Average ascent per lap				
- Average descent per lap				

	ROX 5.0	ROX 6.0 / CAD	ROX 10.0 GPS WITHOUT TRANS- MITTER	ROX 10.0 GPS WITH TRANSMITTER
<b>Miscellaneous</b>				
- LOG book				
- GPS receiver				
- Low battery indicator-computer				
- Low battery indicator-transmitter				
- Number of languages	7	7	5	5
- Automatic start/stop			Can be switched on/off	Can be switched on/off
- Automatic detection of the second or third bike	2	2		
- Backlight				
- Backlight duration configurable				
- UFSB-compatible				
- Zone alarm can be switched on/off			opt.	
- Adjustable contrast				
- Switchover kmh/mph mode				
- Integrated storage chip for data backup (total and setting values)				
- Battery type-receiver	CR 2450	CR 2450	Rechargeable battery	Rechargeable battery
- Battery type-transmitter	CR 2032	CR 2032	CR 2032	CR 2032
- Battery life-receiver*	1 year	1 year	13 hours	13 hours
- Battery life-transmitter*	1 year	1 year		1.4 years
- Watertight			IPX7	IPX7
<b>Total values</b>				
- Total distance for multiple bikes	2	2	3	3
- Total trip time for multiple bikes	2	2	3	3
- Total kcal for multiple bikes	2	2	3	3
- Total altitude gain for multiple bikes		2	3	3
- Maximum altitude for multiple bikes			3	3
- Total distance uphill for multiple bikes			3	3
- Total trip time uphill for multiple bikes			3	3
- Total altitude loss for multiple bikes			3	3
- Total distance downhill for multiple bikes			3	3
- Total trip time downhill for multiple bikes			3	3

	ROX 5.0	ROX 6.0 / CAD	ROX 10.0 GPS WITHOUT TRANSMITTER	ROX 10.0 GPS WITH TRANSMITTER
<b>Altitude calibration</b>				
- Preset start altitudes		1	3	3
- Calibration using air pressure at sea level				
- Calibration via current altitude				
- IAC				
- IAC+				
<b>Running computer functions</b>				
- Running time				
- Total running time				
- Current heart rate				
- Average heart rate				
- Maximum heart rate				
- One target zone				
- % of HR max				
- Audible + visual alarm if target zone thresholds are breached				
- Four intensity zones				
- Graph-based illustration of the intensity zones				
- Kcal				
- Time				
- Countdown timer				
- Current temperature				
- Total kcal				

\* With high quality batteries and 1 hour use per day or 7300 km a year at 20 km/h average speed (batteries available from SIGMA SPORT®)



## OVERVIEW OF FUNCTIONS

## Hiking computer functions

- Hiking time
- Total hiking time
- Current altitude
- Altitude gain
- Maximum altitude
- Total hiking altitude gain
- Current heart rate
- Average heart rate
- Maximum heart rate
- Target zone
- % of HR max
- Audible + visual alarm  
if target zone thresholds are breached
- Four intensity zones
- Graph-based illustration of the intensity zones
- Kcal
- Time
- Countdown timer
- Current temperature
- Total kcal

### PC interface

- PC interface
- Transmission of the settings to the bike computer
- Automatic LOG book
- Memory capacity (approx. in hours)

- Programmable recording interval
- Rest time calculation for selected memory interval
- Waypoints
- Transmission of the trip values to the PC
- Transmission of the total values to the PC

## DATA CENTER functions

- Individual memory evaluation
- Comparison of 2 individual memories
- Summary of total values
- Low battery indicator
- Device settings via PC
- Statistical evaluation
- Calendar function
- Displaying the trip cycled in graph format
- Displaying the speed, cadence, heart rate, and temperature in graph format
- Comparison of two LOGs
- Distribution of the heart rate zones
- Intensity zone distribution
- Start altitude correction available
- Sub-area evaluation
- Print all evaluations
- Send route to device
- Update firmware using Data Center
- Upload to Strava
- Note function
- Deletion of LOG sections/parts of the LOG

**00120**  
DOCKING STATION



**00443**  
STS BIKE 2  
COMPLETE KIT  
To retrofit the 2<sup>nd</sup> bike



**00430**  
TOOL-FREE  
POWER MAGNET 2009



**20330**  
STS CHEST STRAP



**00414**  
CADENCE  
POWER MAGNET



**20315**  
ELASTIC BAND  
for 20330



**20520**  
CADENCE  
MAGNET PEDAL INSERT



**20324**  
R1 STS COMFORTX+  
CHEST STRAP



**00419**  
STS HANDLEBAR MOUNT  
CR 2450



**20326**  
R1 STS HEART RATE  
TRANSMITTER



**00439**  
STS SPEED TRANSMITTER  
For all STS bike computers



**20318**  
COMFORTX+  
CLOTH BAND



**00440**  
STS BIKE 2  
SPEED TRANSMITTER  
COMPLETE KIT  
For 2<sup>nd</sup> bike



**00429**  
WRIST BAND



**00441**  
STS CADENCE  
TRANSMITTER



**00457**  
BUTLER 2450  
HANDLEBAR BRACKET



**00442**  
STS CADENCE  
TRANSMITTER  
Complete kit



**BUTLER ROX 10.0 GPS**

HANDLEBAR BRACKET

Ref. No. 00459

**BUTLER 2450**

HANDLEBAR BRACKET

Ref. No. 00457

- Places all of your ride data comfortably in front of you while riding
- Designed to fit all SIGMA computers using the CR 2450 battery
- For use on 31.8 bars only

**20500**

MICRO USB CABLE  
ROX


**20501**

USB CHARGER


**00430**

TOOL-FREE  
POWER MAGNET


**00414**

CADENCE  
POWER MAGNET


**20520**

CADENCE  
MAGNET PEDAL INSERT


**20502**

ANT+  
SPEED  
TRANSMITTER


**20503**

ANT+  
CADENCE  
TRANSMITTER


**20505**

R1 ANT+ COMFORTX+  
CHEST STRAP


**20504**

R1 ANT+  
HEART RATE  
TRANSMITTER


**20318**

COMFORTX+  
ELASTIC BAND


**00458**

HANDLEBAR MOUNT  
FOR THE ROX 10.0 GPS


**00459**

BUTLER  
HANDLEBAR STEM BRACKET  
FOR THE ROX 10.0 GPS


**00104**

UNIVERSAL FAST  
SETTING BOX  
INCL. 2 AA BATTERIES


**00110**

COMPUTER DIAGNOSTIC  
CENTER


**20316**

LITHIUM BATTERY  
CR 2450  
ROX 5.0/6.0


**00342**

LITHIUM BATTERY  
CR 2032  
Single battery


**00349**

LITHIUM BATTERY  
CR 2032  
10-pack



# SERVICE TOOLS



Ref. No. 00110

## COMPUTER DIAGNOSTIC CENTER

### Fast Diagnosis for Superior Customer Service

With the SIGMA Computer Diagnostic Center you can immediately diagnose and resolve the most common bike computer issues. Eliminate the guess work and quickly and easily determine if there is a problem to be corrected.

- Computer function test
- Computer-mount function test
- Transmitter-function test
- Incl. 9 V battery
- Compatible with bike computers beginning with the TOPLINE 1995
- Battery check – CR 2032 and CR 2450



Ref. No. 00229

## DEMOBOX

### Interactive Sales Tool

The Demobox is a powerful sales tool that provides customers the opportunity to physically touch and try out the SIGMA TOPLINE computers. This fun and interactive P.O.P. gives an overview of each computer's features allowing the consumer to make an informed purchase decision.

- No assembly required
- Computers included
- 228 x 230 x 354 mm

# UFSB

## COMPUTER PROGRAMMING IN SECONDS



**Ref. No. 00104**

With the third generation FAST SETTING BOX, you can program the bike computer quickly and easily and now also simulate speed, cadence and heart rate. Exclusively for the TOPLINE 2009/2012 series: By storing a certain number of kilometers, the service interval function can be activated for an on screen reminder for the rider to visit their local shop for inspection and service.

Customer loyalty is therefore pre-programmed. Equipped with a USB port for future software updates.

[www.ufsb.sigmasport.com](http://www.ufsb.sigmasport.com)

### FEATURES

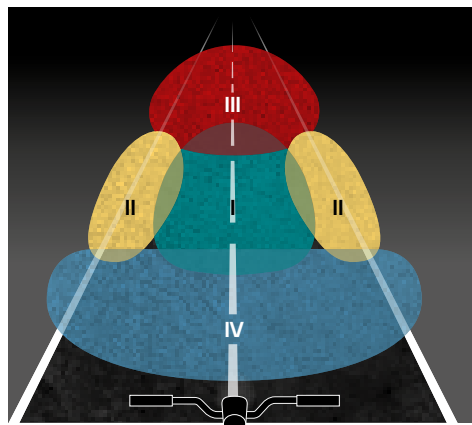
- Compatible with all bike computer models from TOPLINE 2006, 2009 and 2012 (wired and wireless), all ROX models with the exception of the ROX 10.0 GPS, heart rate monitors, and running watches (ONYX series, PC 22.13, PC 25.10, PC 26.14 and RC with the exception of the RC MOVE)
- Programs all computer settings, total values and optional service interval
- Equipped with USB port for future software updates
- Automatic recognition of TOPLINE 2009/2012 and ROX models (auto detect)
- Simulator for speed, cadence and heart rate
- Incl. 2 x AA batteries
- Compact size: 160 x 100 x 40 mm
- Simple to operate:  
Integrated clock and date, one-time altitude setting with automatic calibration of any BC 2209 / BC 14.12 ALTI / ROX computer, subsequent change of individual parameters, e.g. wheel size or time

# ***LIGHTING SYSTEMS***





## SIGMA four-zone lighting pattern model



- I Core zone**  
Optimum illumination for a safe trip
- II Side zone**  
Additional safety, particularly on windy routes and at high speeds
- III Distance zone**  
Necessary safety on fast routes with a clear view into the distance, especially in mountainous terrain
- IV Near zone**  
Safety on slower, technically-demanding, extremely windy routes

### Paths/roads

	CORE	SIDE	DISTANCE	NEAR
Roads within towns/cities	■			
Roads outside towns – flat	■	■		
Paths through fields/meadows	■	■		
Roads outside towns – undulating	■	■	■	
Forest paths	■	■	■	■

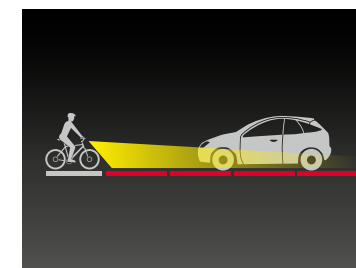
### Zone

	CORE	SIDE	DISTANCE	NEAR
SPEEDSTER	■	■	■	■
SPORTSTER	■	■	■	■
LIGHTSTER	■	■		
ROADSTER	■			

## LUMEN / Optics / LUX

## Road Traffic

### Safety through a glare-free lighting pattern

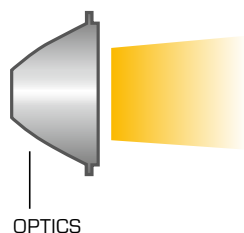


- SPEEDSTER, SPORTSTER, LIGHTSTER and ROADSTER meet the same requirements as those placed on an automobile headlight
- They ensure maximum road safety without blinding other road users
- They offer excellent visibility in the long-distance, up close and the sides
- Their lighting patterns meet a German standard, so such lights can be compared with each other very well via the specified LUX values
- Additional safety plus: SPEEDSTER, SPORTSTER, LIGHTSTER and ROADSTER impress due to their very even light distribution thanks to high performance optics

LED  
LUMEN

**= Amount of light,**  
that can produce the light source  
(LED), thus the light power of the LED

- The higher the lumen value, the more light is provided by the lamp
- LUX values give information about the brightness of a point in the lighting pattern
- The optics determine the distribution of the light from the LED
- The more the optics focuses the light, the greater are the LUX values
- Good optics illuminate close range, sides and distant areas equally well



It **collects the light** from the LED  
by reflection and refraction almost  
without loss



**= Illuminance,**  
indicates the intensity of the light  
that arrives at a specific point on an  
illuminated surface

## VIEWING DISTANCE

25 m

## ROADSTER

## FEATURES

- LED front light battery
- Extremely bright: 16 LUX
- Burn time approx. 20 h
- Two-stage battery indicator
- Tool-free, easy to change batteries (incl. 2 x AA)
- 2 modes: permanent and flashing
- Horizontally adjustable and removable bracket with slide-function
- Tool-free click mounting, suitable even for oversize handlebars
- Click switch with tactile ON/OFF response
- Watertight
- Available in the set with the CUBERIDER BLACK Ref. No. 18511
- Weight: 140 g



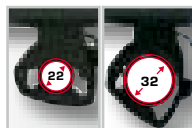
Ref. No. 18501  
int. Version

\* See the graphic on page 41



### Click switch + Battery indicator

- Exposed ON/OFF switch. Easy to use even with winter gloves
- Two-stage battery indicator



### UNI-FIT

- Fits all common handlebar diameters of 22-32 mm



### Bracket

- Slide function for quick removal of the lamp
- Ergonomic handle for easy release



### High performance optics

- For homogeneous, and anti-glare 16 LUX

# 16 LUX

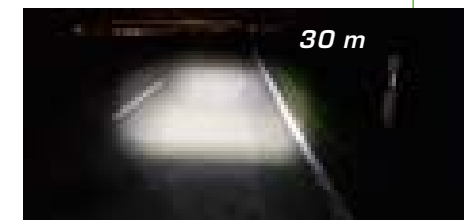
The ROADSTER stands for safe yet fun cycling on the road. This is made possible by the 16 LUX, glare-free lighting pattern with a 25 m viewing distance.

# 20 LUX

High-performance optics and LED technology have culminated in the shapely LIGHTSTER 20 LUX. A safety feature is the wide, anti-glare lighting pattern, which provides up to 20 h of homogeneous illumination.

## LIGHTSTER

### VIEWING DISTANCE



### FEATURES

- LED front light battery
- Super bright 20 LUX
- Burn time approx. 20 h
- Two-stage battery indicator
- Tool-free, easy to change batteries (4 x AA)
- Horizontally adjustable and removable bracket with slide-function
- Tool-free click mounting, suitable even for oversize handlebars
- Click switch with tactile ON/OFF response
- Charging socket + charge status indicator
- Watertight
- Weight: 205 g
- Batteries not included



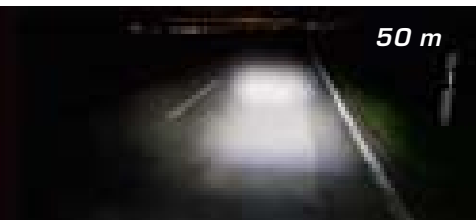
Ref. No. 18400



11/12 2011

\* See the graphic on page 41

## VIEWING DISTANCE



## FEATURES

- USB rechargeable LED front light with MICRO-USB re-charging function
- Brightness in the center of the lighting pattern: 30 LUX
- Integrated lithium-ion rechargeable battery
- Special lens for side visibility & optimized close-range illumination
- 2 Modes: power and standard mode
- Burn time: 3,5 h (Power-) & 7 h (Standard mode)
- Charged in 4 hours
- 5-stage battery/charge status indicator
- Quick release bracket with horizontal adjustment
- Tool-free click mounting, suitable even for oversize handlebars
- Click switch with tactile ON/OFF response
- Watertight
- Weight: 96 g

## SPORTSTER

**NEW!**

4 ZONES

USB CHARGING



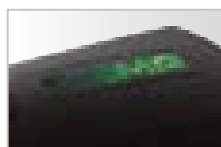
Ref. No. 17275

BLACK

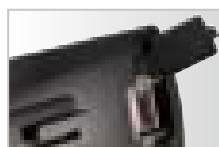


Ref. No. 17276

WHITE



Battery/charge indicator



Lithium-ion rechargeable battery

- On the top of the light is a 5-stage battery and charge indicator
- The integrated lithium-ion battery can be quickly recharged using a USB cable

# 30 LUX

A compact design with a 30 LUX beam to optimally light your way home, whether in the city or out in the country.

\* See the graphic on page 41.

# 230 LUMEN 35 LUX

The powerful light output of up to 230 lumen at 35 lux is generated thanks to the power LED technology. A beam range of 80 meters makes this the perfect light for fast-speed trips.

## SPEEDSTER

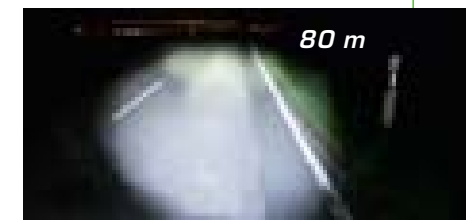
4 ZONES \*

USB CHARGING



Ref. No. 18540

### VIEWING DISTANCE



### FEATURES

- USB rechargeable LED front light with MICRO-USB re-charging function
- Extremely high light output: 230 lumens
- Outstanding brightness in the center of the lighting pattern: 35 LUX
- Integrated lithium-ion rechargeable battery with integrated USB re-charging function
- 3 Modes: power-, standard- and energy-saving mode
- Burn time: 2,5 h (Power-), 4,5 h (Standard-), 9,5 h (Energy-saving mode)
- 6-stage battery/charge status indicator
- Quick release bracket with horizontal adjustment
- Tool-free click mounting, suitable even for oversize handlebars
- Click switch with tactile ON/OFF response
- Watertight
- Weight: 180 g



#### High-performance optics + side visibility

- For a homogeneous and glare-free lighting pattern
- Side visibility via a light guide for added safety



#### Bracket

- Slider function for quick removal of the light
- Ergonomic handle for easy release

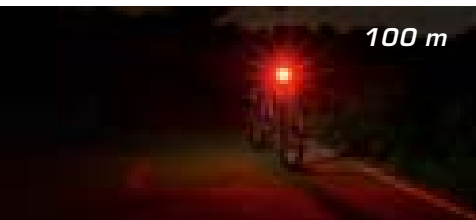


#### Click switch + battery/charge status indicator

- Exposed ON/OFF switch. Easy to use even with winter gloves
- 6-stage battery/charge status indicator

\* See the graphic on page 41.

## VISIBILITY



## FEATURES

- Electronic LED tail light
- 5 high performance LEDs
- 2 modes: permanent and flashing
- Two-stage battery indicator
- Extremely simple battery change (incl. 2 x AAA)
- Fast tool-free mounting
- Extremely long burn time up to 60 h
- Click switch
- Watertight
- Weight: 60 g



Ref. No. 18115  
int. Version

## CUBERIDER II

## 5 BRIGHT-LEDs

With five red high power LEDs plus the tried and tested 220° visible angle beam, you cannot be overlooked with the CUBERIDER II.





# 1 HIGH POWER LED

In its slim casing, the HIRO ensures a high degree of safety on the roads. Based on just one red high power LED, the stylish rear light is equipped with enormous lighting power for up to 60 hours.

HIRO

## VISIBILITY

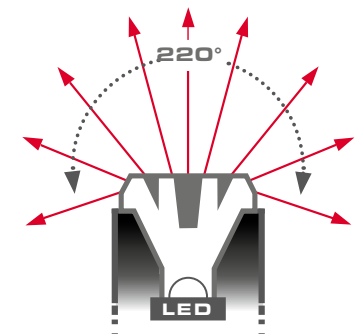


## FEATURES

- Electronic LED tail light
- Super bright red 0,5 W High Power LED
- 2 modes: permanent and flashing
- Two-stage battery indicator
- Extremely simple battery change (incl. 2 x Size N batteries)
- Extremely long burn time up to 60 h
- Fast tool-free mounting
- Click switch
- Watertight
- Weight: 42 g

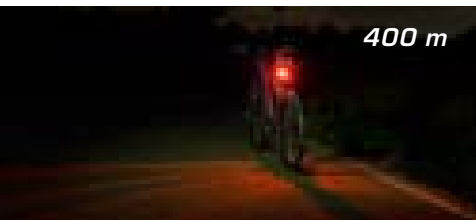


Ref.-No. 19110  
int. Version



High performance optics

## VISIBILITY



## FEATURES

- USB rechargeable LED tail light with MICRO-USB re-charging function
- Integrated lithium-ion rechargeable battery
- 0.5 W power LED
- Excellent visibility thanks to the new SIGMA LOOP-LIGHT-SYSTEM
- 2 modes: standard and flashing
- Burn time: 7 h (Standard-) and 8 h (Flashing mode)
- 2-stage battery / charge status indicator
- Adjustable, removable bracket
- Tool-free O-ring installation
- Click switch with tactile ON / OFF response
- Water resistant
- Weight: 35 g

## MONO RL



Ref. No. 17274 int. Version

BLACK



Ref. No. 17284 int. Version

WHITE

# 1 POWER LED

Visibility epitomized. The MONO RL impresses with its ultra-bright, red 0.5 watt power LED, great conspicuousness thanks to the SIGMA LOOP-LIGHT-SYSTEM, and not least its attractive circular design.

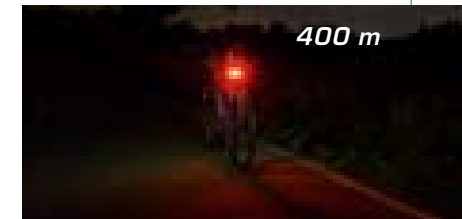


# LOOP-LIGHT-SYSTEM

This rear light was developed to offer optimum safety in heavy traffic. The integrated MICRO-USB recharging function makes it a technical marvel for when out and about.

STEREO

VISIBILITY



FEATURES

- LED battery rear light with integrated recharging function
- Two 0,5 Watt high power LEDs
- Excellent visibility thanks to the SIGMA LOOP-LIGHT-SYSTEM
- Burn time permanent: approx. 20 h, flashing: approx. 40 h
- 2-stage battery indicator
- Tool-free, easy to change batteries (incl. 2 x AAA RTU NiMH rechargeable batteries)
- Vertically adjustable, removable bracket with a twist-lock function
- Tool-free O-ring installation
- Click switch with tactile ON/OFF response
- Watertight
- Weight: 70 g

USB CHARGING



Ref. No. 19410 int. Version



High-performance optics

- For optimum visibility thanks to the SIGMA LOOP-LIGHT-SYSTEM



Bracket

- Twist-lock function for quick removal of the light



Click switch + Battery indicator

- ON/OFF response and easy access even with gloves
- Two-stage battery indicator

## VISIBILITY

300 m

## FEATURES

- LED battery tail light
- 0.5 W power LED + 2 ultra-bright LEDs
- 3 modes: permanent (all LEDs flashing), only 0.5 W LED permanent and only 2 LEDs flashing
- Extremely simple battery change (incl. 2 x AAA)
- Extremely long burn time up to 100 h
- Includes belt clip
- Watertight
- Weight: 70 g



Ref. No. 11813

## TAIL BLAZER

## THE EYE CATCHER

### STAGELIGHT S

Products to touch.  
Ideal for presenting the SIGMA  
front and tail lights on the counter  
or on shelves.

- The perfect lighting display for your sales room
- Dimensions approx.  
320 x 400 x 283 mm
- Unequipped



Ref. No. 908005  
Unequipped

# LIGHTING SETS

## ROADSTER



### ROADSTER/CUBERIDER Complete Set

Ref. No. 18511  
int. Version

ROADSTER +  
CUBERIDER BLACK +  
2 x AA batteries +  
2 x Size N batteries



## LIGHTSTER



### LIGHTSTER Front Light Set

Ref. No. 18410

LIGHTSTER +  
4 x AA RTU Ni-MH  
rechargeable batteries  
1500 mAh + EU-charger  
(not available with UK charger)



### LIGHTSTER/CUBERIDER II Lighting Set

Ref. No. 18430  
int. Version

LIGHTSTER +  
CUBERIDER II +  
2 x AAA batteries



### LIGHTSTER/CUBERIDER II Complete Set

Ref. No. 18441  
int. Version

LIGHTSTER +  
CUBERIDER II +  
4 x AA RTU Ni-MH  
rechargeable batteries  
1500 mAh + EU-charger  
(not available with UK charger)  
+2 x AAA batteries



## SPORTSTER



### SPORTSTER / MONO RL Complete Set BLACK

Ref. No. 18250

SPORTSTER +  
MONO RL BLACK +  
USB-EU-charger  
(not available with UK charger) +  
Micro-USB-CABLE +



### SPORTSTER / MONO RL Complete Set WHITE

Ref. No. 18251

SPORTSTER +  
MONO RL WHITE +  
USB-EU-charger  
(not available with UK charger) +  
Micro-USB-CABLE +



## SPEEDSTER



### SPEEDSTER / HIRO Complete Set

Ref. No. 18555  
int. Version

SPEEDSTER +  
HIRO +  
USB-EU-charger  
(not available with UK charger) +  
Micro-USB-CABLE +  
2 x Size N batteries



## MONO



### MONO FL / MONO RL Set BLACK

Ref.-No. 17290  
int. Version

MONO FL Black +  
MONO RL Black



### MONO FL / MONO RL Set WHITE

Ref.-No. 17291  
int. Version

MONO FL White +  
MONO RL White



## VIEWING DISTANCE

50 m

## BUSTER 200

**NEW!**

USB  
CHARGING

# POWER LIGHTS

# 200 LUMEN

### Robust powerhouse

Whether in the city or on tough offroad terrain, the BUSTER impresses with its bright 200 lumen and stainless steel housing.

## FEATURES

- LED front light with the latest LED technology
- Integrated lithium-ion rechargeable battery
- light output: 200 lumen
- Special lens for side visibility
- 6 modes: Power- (200 lm), standard mode (100 lm), eco mode (50 lm), flashing mode, fast-flashing mode, SOS flashing mode
- Burn time: 2 hours (power more), 3.5 hours (standard mode), 7 hours (eco mode), 6 hours (flashing mode), 5.5 hours (fast-flashing mode) & 8 hours (SOS flashing mode)
- Charged in 3 hours
- 2-stage battery indicator
- Can be charged during use
- Horizontally adjustable and removable bracket with slide function
- Premium aluminum body for optimum temperature management
- Tool-free attachment thanks to the screw-bracket with a coin slot. Also suitable for oversized handlebars
- Silicone bracket optional
- Click switch with tactile ON/OFF response with switch on protection (double click for ON)
- Watertight
- Weight: 104 g

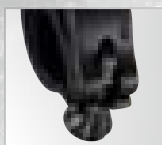


Ref. No. 18700



### High performance optics + side visibility

- Special lens for side visibility



### Bracket

- New, compact mount thanks to the screw-bracket with a coin slot. Also suitable for oversized handlebars.
- Optionally available: Highly flexible silicone bracket, which fits to all handlebar shapes and can be quickly attached.



### Click switch+ Battery/charge indicator

- ON/OFF response and easy access even when wearing gloves
- 2-stage battery indicator



### Bumper

- Protective silicone casing for use in tough conditions



# 320 LUMEN

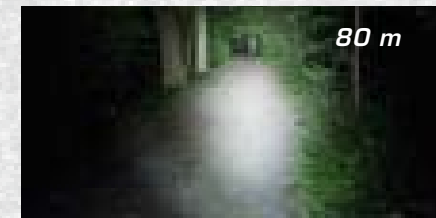
Small lightweight with enormous lighting power – this is the KARMA EVO. Tried-and-tested LED technology for an impressive 320 lumen.

## KARMA EVO



Ref. No. 16920

### VIEWING DISTANCE



### FEATURES

- Single-chip LED technology
- Enormous light output up to 320 lumens
- Extra long burn time with constant brightness (8 h power-, 12 h standard-, 24 h energy-saving mode with IION XL)
- 4 modes: energy saving, standard, power and flashing
- Multi-stage battery capacity indicator
- Extremely durable aluminum housing
- Watertight
- Tool-free click-mounting (uni-fit 22-32 mm)
- Horizontally adjustable
- Switch on protection (double click for ON)
- Low weight: 70 g
- Helmet bracket - optional

### SETS

#### KARMA EVO PRO-Set

Ref. No. 16921

UK Ref. No. 16922

KARMA EVO + IION XL +  
Charger + Click-mounting

#### KARMA EVO PRO K-Set

Ref. No. 16924

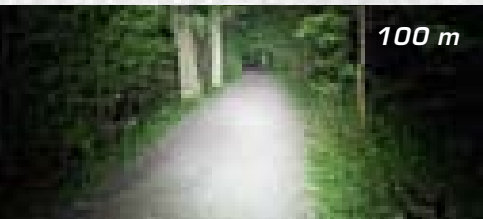
KARMA EVO + IION XL + Charger +  
Helmet bracket + Click-mounting

#### Helmet bracket set

Ref. No. 17530

Perfect uniform lighting  
in the line of sight

## VIEWING DISTANCE



100 m

## FEATURES

- Multi-chip LED technology
- Extreme light output up to 900 lumens
- Extra long burn time with constant brightness (3 h power, 5 h standard-, 11 h energy-saving mode with IION XL)
- 4 modes: energy saving, standard, power and flashing
- Extremely durable aluminium housing
- Watertight
- Multi-stage battery capacity indicator
- Tool-free click-mounting (uni-fit 22-32 mm)
- Horizontally adjustable
- Switch on protection (double click for ON)
- Low weight: 140 g
- Helmet bracket - optional

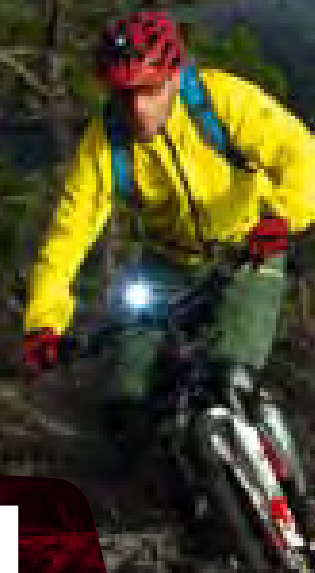
# POWERLED EVO



Ref. No. 16900

# 900 LUMENS

The POWERLED EVO is the dream of all night riders with up to 900 lumens, the LED lamp guides safely through any terrain.



**Helmet bracket set**  
Ref. No. 17530

Perfect uniform lighting  
in the line of sight



**Exposed  
ON/OFF switch**

Easy to use, even with  
winter gloves



**Intelligent thermal  
management**

Optimal heat dispersal  
via large cooling fins

## SETS

### POWERLED EVO PRO Set

Ref. No. 16910

UK Ref. No. 16911

POWERLED EVO + IION XL + Charger

### POWERLED EVO PRO C-Set

Ref. No. 16913

POWERLED EVO + IION XL+ Charger +  
Helmet bracket + Click-mounting



02/2011



11/2011



04/2011



04/2011

# IIONXL



Ref. No. 17182

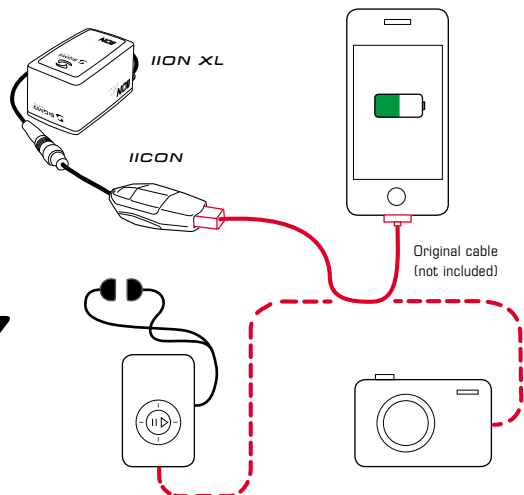
## USB CONNECT

The universal USB charger adapter IICON turns the SIGMA IION rechargeable battery into a universal energy source for all USB-chargeable devices, wherever you are.

# IICON



Ref. No. 17190



### FEATURES

- Lithium-ion rechargeable battery
- Best energy ratio
- No self-discharge rate
- Temperature resilient
- Tool-free mounting
- Universal mounting (stem or frame)
- Watertight
- Matte finish housing
- Includes velcro tape and cable ties
- Automatic quick charger with charging display and overload protection
- Automatic detection of battery-full level
- Worldwide use due to varying voltage input

### COMPATIBILITIES

#### FEATURES

	IION XL
- Number of Li-Ion cells	4 cells
- Weight	210 g
- Charging time	5 h
- Dimensions	8 x 4 x 4 cm

#### Single lights

- POWERLED BLACK	<div><div></div></div>
- KARMA	<div><div></div></div>
- POWERLED EVO	<div><div></div></div>
- KARMA EVO	<div><div></div></div>

#### Twin headlights (Y-cable)

- 2 x POWERLED BLACK	<div><div></div></div>
- 2 x KARMA	<div><div></div></div>
- 2 x POWERLED EVO	<div><div></div></div>
- 2 x KARMA EVO	<div><div></div></div>
- 1 x POWERLED EVO + 1 x KARMA EVO	<div><div></div></div>

### SETS

#### IION XL PRO-Set

Ref. No. 17183

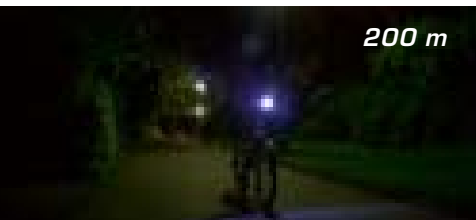
UK Ref.No. 17185

IION XL + Charger

### FEATURES

- For charging all USB-chargeable devices (5V/500 mA)
- Red control LED indicates that device is ready to use
- Simple, tool-free installation by connecting the IICON to the IION XL cable
- Watertight

## VISIBILITY



200 m

## FEATURES

- LED Safety Light
- 3 super bright white LEDs
- 2 modes: permanent and flashing
- Extra long burn time up to 40 h (3 x AAA)
- Click switch
- Tool-free mounting (Twist Lock)
- Uni-fit bracket 22-32 mm
- Water resistant
- Weight: 28 g
- Batteries not included

# ILLUX



Ref. No. 13300

## 3 LEDs

With its 3 super bright LEDs, the small, lightweight ILLUX provides good light at close range and is perfect for being seen.

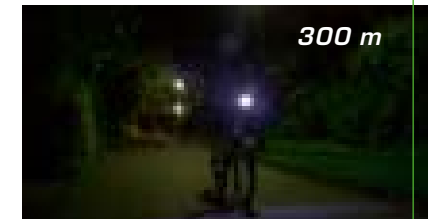


# 4 LEDs

This light is impressive! By its 4 very bright LEDs and the special shape of the lens, the stylish front headlight also attracts attention impressively from the side.

ELOY

## VISIBILITY



## FEATURES

- LED front light
- 4 super bright white LEDs
- Extremely long burn time up to 100 h
- 2 modes: permanent and flashing
- CLICK&GO bracket for all common handlebar diameters (22-32 mm)
- Side visibility through special shape of lens
- Tool-free battery change (3 x AA)
- Water resistant
- Lightweight 140 g
- Batteries not included
- Available as set with the CUBERIDER as ELOY BLACK COMBO **Ref. No. 13008** or ELOY WHITE COMBO **Ref. No. 13012**



Ref. No. 13007

BLACK



Ref. No. 13011

WHITE



## VISIBILITY

400 m

## FEATURES

- USB rechargeable LED front light with MICRO-USB re-charging function
- Integrated lithium-ion rechargeable battery
- 0.5 W power LED
- 2 modes: standard and flashing
- Burn time: 5 h (Standard-) and 8 h (Flashing mode)
- 2-stage battery / charge status indicator
- Adjustable, removable bracket
- Tool-free O-ring installation
- Click switch with tactile ON/OFF response
- Water resistant
- Weight: 32 g
- Available as set with MONO RL

**Ref. No. 17290**

MONO FL/RL BLACK SET

**Ref. No. 17291**

MONO FL/RL WHITE SET



## MONO FL



**Ref. No. 17272**

BLACK



**Ref. No. 17282**

WHITE

# 1 POWER LED

Visibility epitomized. The new MONO FL impresses with its ultra-bright 0.5 watt power LED as well as its attractive circular design.



# 1 POWER LED

The ideal light for short rides by modern city dwellers: an attractive, easy-to-mount design that offers excellent visibility at all times thanks to the ultra-bright white 0.5 watt power LED.

**SIGGI**

**VISIBILITY**



**FEATURES**

- USB rechargeable LED front light with MICRO-USB re-charging function
- Integrated lithium-ion rechargeable battery
- 0.5 W power LED
- 3 modes: power, standard and flashing
- Burn time: 5 h (Power-), 9 h (Standard-), 8 h (Flashing mode)
- 2-stage battery / charge status indicator
- Side visibility
- Tool-free installation with integrated silicone strap
- Click switch mit tactile ON/OFF response
- Water resistant
- Weight: 40 g



Ref. No. 17280

BLACK

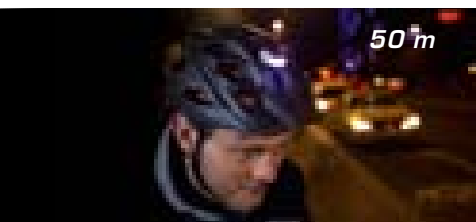


Ref. No. 17281

RED

USB  
CHARGING

## VISIBILITY



## FEATURES

- Universal LED safety light - red and white
- Extra bright and improved side visibility
- 2 modes: permanent and flashing
- 2 flexible velcro straps in different lengths + uni-fit strap for variable mounting
- Tool-free battery change (2 x CR 2032 incl.)
- Handy click switch
- Water resistant
- Lightweight 20 g
- Available in 6 colors
- Available as set MICRO COMBO,

### Ref. No.17243

(RED/LED-Red + WHITE/LED-White)

## MICRO



Ref. No. 17237

WHITE /LED-White

Ref. No. 17231

RED /LED-Red



SILVER

SILVER/LED-Red Ref. No. 17234

SILVER/LED-White Ref. No. 17240



BLACK

BLACK/LED-Red Ref. No. 17235

BLACK/LED-White Ref. No. 17241



BLUE

BLUE/LED-Red Ref. No. 17232

BLUE/LED-White Ref. No. 17238

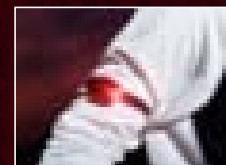


GREEN

GREEN/LED-Red Ref. No. 17233

GREEN/LED-White Ref. No. 17239

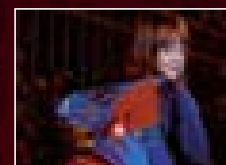
## OTHER USES



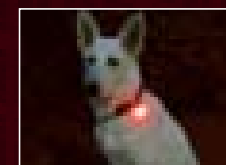
Arm



Backpack



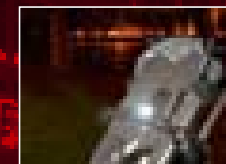
School satchel



Collar



Walker



Stroller



**Flexible Velcro straps and uni-fit straps**

For universal use and a variable mounting



# SAFETY *PLUS*

The colorful SIGMA MICROs are practical, useful, and let you be seen everywhere. The application possibilities of the attractive LED lights are diverse in everyday life and sport.

## VIEWING DISTANCE

15 m

## HEADLED

# 5 LEDs

The lightweight SIGMA headlight, equipped with five ultra bright LEDs, is suitable for all kinds of usage. Its illumination power, with two light modes, is extremely high, despite its small, compact construction.

## FEATURES

- 5 super bright white LEDs
- Extremely lightweight (37 g without batteries)
- Long burn time (up to 60 h)
- Up to 15 m viewing distance
- Standard, energy-saving mode and flashing
- Tool-free battery change (3 x AAA incl.)
- Water resistant
- Weight: 75 g



Ref. No. 17050



## HEADLIGHT DISPLAY STAND

Ref. No. 10110  
Unequipped

Ideal for product presentation

- Dimensions: 90 x 270 x 110 mm
- SIGMA printed logo



### Rugged Housing

- With rubber-touch surface



### Adjustable Lighting Angle

- Ideal for all sports offering optimum light output and uniform lighting



### Elastic Head Strap

- Easy to remove from the housing, hand washable



### Click Switch

- Easy ON/OFF, even when wearing gloves



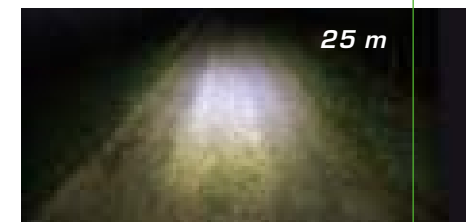
# LIGHT WEIGHT ON THE HEAD

With an impressively light weight of just 56 g, the bright Mono HL can be put to versatile use for all recreational activities.



## MONO HL

### VIEWING DISTANCE



**NEW!**

USB  
CHARGING



Ref. No. 17295

### FEATURES

- One ultra-bright white 0.5 watt power LED
- Integrated lithium-ion rechargeable battery
- MICRO-USB charging function
- Reflective strip on the back of the head
- Viewing distance: 25 m
- Visibility of up to 400 m
- Three modes: power, standard, and flashing
- Burn time of up to 5 hours in power mode, 8 hours in standard mode and 10 hours in flashing mode
- Two-stage battery and charge status indicator
- Click switch with a clear ON/OFF response for easy operation even when wearing gloves
- Detachable bracket with an adjustable tilt angle
- Incl. universal bracket
- Compact, watertight housing
- Detachable, washable reflective strip
- Water resistant
- Weight: 56 g



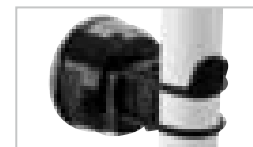
#### MICRO-USB recharging function

- LED headlamp with integrated MICRO-USB recharging function  
Charge period: 3 h



#### Reflective strip

- A reflective strip incorporated into the elasticated strap around the back of the head provides enhanced safety while running in the dark



#### Universal bracket

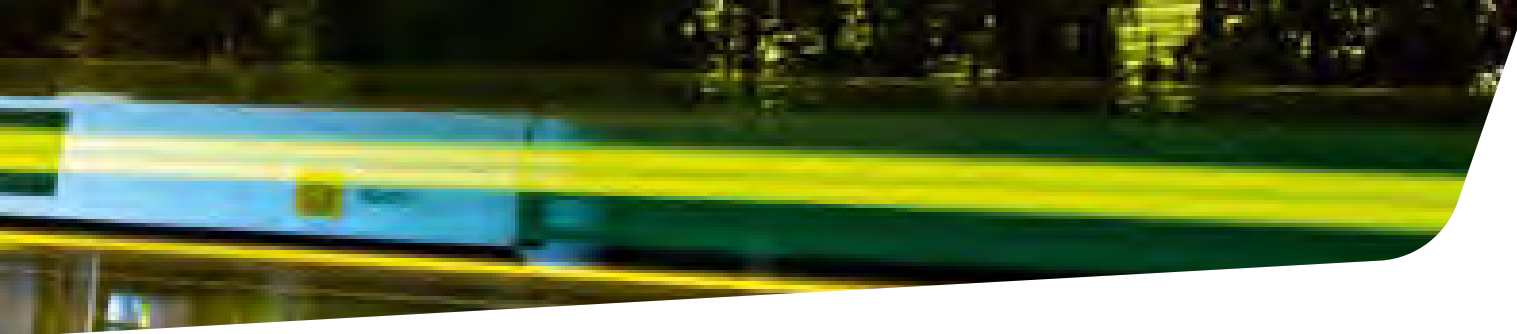
- Bracket for attachment to common handlebar diameters of 22-32 mm

# FUNCTION OVERVIEW

	 ROADSTER	 LIGHTSTER	 SPORTSTER	 SPEEDSTER	 CUBERIDER	 CUBERIDER II	 HIRO	 MONO RL	 STEREO
Lighting type	1 High Power LED	1 High Power LED	1 High Power LED	1 High Power LED	4 LEDs	5 LEDs	1 x 0,5 W High Power LED	1 x 0,5 W Power LED	2 x 0,5 W High Power LED
Burn time*	Up to 20 h	Up to 20 h	Up to 7 h	Up to 9,5 h	Up to 40 h	Up to 60 h	Up to 60 h	Up to 8 h	Up to 20 h
Effectiveness [LUX]	16 LUX	20 LUX	30 LUX	35 LUX					
Light output [lumen]				230 LUMENS					
Battery	Incl. 2 x AA	4 x AA	Integrated lithium-ion rechargeable battery	Integrated lithium-ion rechargeable battery	2 x SIZE N	Incl. 2 x AAA	2 x SIZE N	Integrated lithium-ion rechargeable battery	Incl. 2 x AAA RTU-Akkus
Water resistant									
Watertight									
Tool-free battery change									
Tool-free installation									
Horizontally adjustable bracket									
Uni-fit 22-32 mm									
Integrated charge function									

\*Depending on the batteries





										
TAIL BLAZER	BUSTER 200	HARMA EVO	POWERLED EVO	ILLUX	ELOV	MONO FL	SIGGI	MICRO	HEADLED	MONO HL
1 x 0,5 W Power LED + 2 LEDs	1 CREE LED	Single-Chip-LED	Multi-Chip-LED	3 LEDs	4 LEDs	1 x 0,5 W Power LED	1 x 0,5 W Power LED	1 LED	5 LEDs	1 x 0,5 Watt Power LED
Up to 100 h	Up to 8 h	Up to 24 h	Up to 11 h	Up to 40 h	Up to 100 h	Up to 8 h	Up to 9 h	Up to 50 h	Up to 60 h	Up to 10 h
									3 LUX	
	200 LUMENS	320 LUMEN	900 LUMEN							
Incl. 2 x AAA	Integrated lithium-ion rechargeable battery	IION / IION XL	IION / IION XL	3 x AAA	3 x AA	Integrated lithium-ion rechargeable battery	Integrated lithium-ion rechargeable battery	Incl. 2 x CR 2032	Incl. 3 x AAA	Integrated lithium-ion rechargeable battery
<input checked="" type="checkbox"/>	<input checked="" type="checkbox"/>	<input checked="" type="checkbox"/>	<input checked="" type="checkbox"/>	<input checked="" type="checkbox"/>	<input checked="" type="checkbox"/>	<input checked="" type="checkbox"/>	<input checked="" type="checkbox"/>	<input checked="" type="checkbox"/>	<input checked="" type="checkbox"/>	<input checked="" type="checkbox"/>
<input checked="" type="checkbox"/>	<input checked="" type="checkbox"/>	<input checked="" type="checkbox"/>	<input checked="" type="checkbox"/>	<input checked="" type="checkbox"/>	<input checked="" type="checkbox"/>	<input checked="" type="checkbox"/>	<input checked="" type="checkbox"/>	<input checked="" type="checkbox"/>	<input checked="" type="checkbox"/>	<input checked="" type="checkbox"/>
<input checked="" type="checkbox"/>	<input checked="" type="checkbox"/>	extern	extern	<input checked="" type="checkbox"/>	<input checked="" type="checkbox"/>	<input checked="" type="checkbox"/>	<input checked="" type="checkbox"/>	<input checked="" type="checkbox"/>	<input checked="" type="checkbox"/>	<input checked="" type="checkbox"/>
<input checked="" type="checkbox"/>	<input checked="" type="checkbox"/>	<input checked="" type="checkbox"/>	<input checked="" type="checkbox"/>	<input checked="" type="checkbox"/>	<input checked="" type="checkbox"/>	<input checked="" type="checkbox"/>	<input checked="" type="checkbox"/>	<input checked="" type="checkbox"/>	<input checked="" type="checkbox"/>	<input checked="" type="checkbox"/>
<input checked="" type="checkbox"/>	<input checked="" type="checkbox"/>	<input checked="" type="checkbox"/>	<input checked="" type="checkbox"/>	<input checked="" type="checkbox"/>	<input checked="" type="checkbox"/>	<input checked="" type="checkbox"/>	<input checked="" type="checkbox"/>	<input checked="" type="checkbox"/>	<input checked="" type="checkbox"/>	<input checked="" type="checkbox"/>
<input checked="" type="checkbox"/>	<input checked="" type="checkbox"/>	<input checked="" type="checkbox"/>	<input checked="" type="checkbox"/>	<input checked="" type="checkbox"/>	<input checked="" type="checkbox"/>	<input checked="" type="checkbox"/>	<input checked="" type="checkbox"/>	<input checked="" type="checkbox"/>	<input checked="" type="checkbox"/>	<input checked="" type="checkbox"/>
<input checked="" type="checkbox"/>	<input checked="" type="checkbox"/>	<input checked="" type="checkbox"/>	<input checked="" type="checkbox"/>	<input checked="" type="checkbox"/>	<input checked="" type="checkbox"/>	<input checked="" type="checkbox"/>	<input checked="" type="checkbox"/>	<input checked="" type="checkbox"/>	<input checked="" type="checkbox"/>	<input checked="" type="checkbox"/>

## BATTERIES

### 00450

#### POWER PACKET RTU

- For LIGHTSTER
- RTU Ni-MH rechargeable battery 1500 mAh
- Type AA, 4 pcs. pack



### 00452

#### POWER PACKET RTU

- For LIGHTSTER
- RTU Ni-MH rechargeable battery 2100 mAh
- Type AA, 4 pcs. pack



### 00456

#### POWER PACKET RTU

- For STEREO
- RTU Ni-MH rechargeable battery 800 mAh
- Type AAA, 2 pcs. pack



### 00454

#### POWER PACKET

- For ELOY
- Alkaline batteries
- Type AA, 3 pcs. pack



### 00455

#### POWER PACKET

- For ROADSTER
- Alkaline batteries
- Type AA, 2 pcs. pack



### 00361

#### POWER PACKET

- For CUBERIDER II
- Alkaline battery
- Type AAA, 2 pcs. pack



### 00353

#### POWER PACKET

- For HEADLED/QUADRO X
- Alkaline battery
- Type AAA, 3 pcs. pack



### 10341

#### POWER PACKET

- For CUBERIDER/HIRO
- Alkaline battery type LR1, 2 pcs. pack



### 10340

#### POWER PACKET

- Alkaline battery type LR1, 10 pcs. pack



### 00349

#### 3V CR 2032 LITHIUM BATTERY, 10 PACK

- For MICRO

10 X

### 00342

#### 3 V CR 2032 LITHIUM BATTERY, INDIVIDUAL

- For MICRO



## CHARGER

### 17182

#### IION XL

- For KARMA EVO / POWERLED EVO /
- Li-Ion rechargeable battery



### 17183

#### PRO-SET IION XL

- IION XL +
- IION charger
- IION bracket



### 17420

#### CHARGER IION XL

- Charger for IION XL Li-Ion battery
- Charging time approx. 2.5 h/5 h



### 00344

#### CHARGER

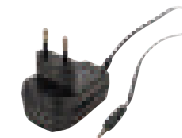
- For direct connection of the PAVA



### 18444

#### CHARGER

- For direct connection of the LIGHTSTER



### 18552

#### CHARGER + CHARGING CABLE MICRO-USB

- For direct connection of the SPORTSTER / SPEEDSTER / STEREO / MONO RL / MONO FL / MONO HL / SIGGI / BUSTER 200



### 18553

#### CHARGING CABLE MICRO-USB

- For direct connection of the SPORTSTER / SPEEDSTER / STEREO / MONO RL / MONO FL / MONO HL / SIGGI / BUSTER 200



**00132****MOUNTING**

- For CUBERIDER
- Incl. 2 mounting O-rings

**00135****MOUNTING**

- For CUBERIDER II

**00136****MOUNTING**

- For CUBELIGHT II
- Ø 22-32 mm

**00137****MOUNTING**

- For HIRO

**00138****MOUNTING**

- For SPEEDSTER / LIGHTSTER / ROADSTER
- Ø 22-32 mm

**00142****MOUNTING**

- For STEREO

**00145****SILICONE BRACKET**

- For BUSTER 200

**00460****SPARE SCREW-BRACKET MOUNT**

- For BUSTER 200

**17430****IION XL MOUNTING**

- For IION XL
- Twist-Lock incl. Velcro strap + mounting parts

**17520****MOUNTING**

- For POWERLED EVO / KARMA EVO / KARMA / QUADRO X / QUADRO / SPORTSTER
- Ø 22-32 mm

**17530****HELMET BRACKET SET**

- For POWERLED EVO / KARMA EVO
- Incl. extension cable IION

**17531****HELMET BRACKET SET**

- For POWERLED EVO / KARMA EVO / QUADRO X / QUADRO
- Without extension cable IION

**10346****HS3 SPARE BULB**

- For CUBELIGHT + II/VARIO
- 2,4 W / 6 V

**17440****IION XL Y-CABLE**

- Y-cable for fitting twin headlights
- POWERLED BLACK / KARMA / POWERLED EVO / KARMA EVO



# ***SPORT WATCHES***

SC

# STOPWATCH

Whether a sportsperson or a trainer: time matters. With the stopwatch, you can view the time with just a click. The SC 6.12 records the time to the nearest hundredth of a second for up to 99 laps and has a sporty design that looks great on any handlebars.

SC 6.12

## FEATURES

- Stopwatch
- Display to the nearest hundredth of a second
- Memory for 7 training sessions
- Lap counter (99 laps)
- BestLap indicator
- Easy LapView
- Backlit display
- Large, easy-to-read display
- Alarm clock function
- Water resistant



Ref. No. 26120

### Display to the nearest hundredth of a second



- The display to the nearest hundredth of a second for up to seven training sessions makes it possible to precisely compare performance and people

### Bestlap indicator/ Easy LapView



- Whether evaluating data or still training, this function gives you an immediate picture of how the training is going and which of the completed laps is the best

### Backlit display



- The display enables sportspeople to train at any time of year or day while still having an optimal view of everything at a glance

# 5 COLORS

Put on the watch, press a single button and you're ready to go. The PC 3.11 is the ideal entry level heart rate monitor for those looking to begin heart rate based training – whether in the gym, walking or jogging. The PC 3.11 can also be used as a stopwatch when the chest belt is not worn.



Ref. No. 23111

PINK



Ref. No. 23112

GREEN



Ref. No. 23113

ORANGE



Ref. No. 23114

BLUE



## PC 3.11

### FEATURES

- ECG-accurate
- Top button
- Clear display
- Stopwatch with time to the nearest tenth of a second
- Clock
- Stopwatch feature without wearing the chest belt
- Watertight



Ref. No. 23110

BLACK



Top Button



Clear display

- Easy operation using the top button

- Large digits on both lines

# CALORIE COUNTER

The PC 10.11 features a streamlined design, large display and three operating buttons. Complete with a calorie counter, programmable target zone and zone alarm, this easy-to-use heart rate monitor will turn heads in the gym and enable heart-rate-based fitness training.

Calorie counter



Calorie burned displayed during training

Training time/  
target zone



Percentage of time spent within the training zone

Zone indicator



Ensure that you are always training within the right heart rate zone



## PC 10.11

### FEATURES

- ECG-accurate
- Automated function for calculating the target zones
- Average heart rate
- Calorie counter
- Training time and percentage of time within the designated target zone
- Training mode with 1 programmable zone
- Zone indicator
- Zone alarm
- Battery status display
- Full text display with 5 available languages
- Watertight



Ref. No. 21010

GRAY



Ref. No. 21011

PURPLE



Ref. No. 21012

BLUE

## FEATURES

## PC 15.11

- ECG-accurate
- Current, average and maximum heart rate
- Lap counter (50 laps)
- Easy LapView
- Automated function for calculating the target zones
- Zone bar showing the current heart rate as a percentage of the HRmax
- Training time and percentage of time within the designated target zone
- Calorie counter
- Training mode with 1 programmable zone
- Audible and visual zone alarm
- Backlit display
- Battery status display
- Battery compartment
- Full text display with 5 available languages
- Watertight



**Ref. No. 21510**

GRAY



**Ref. No. 21511**

YELLOW



**Ref. No. 21512**

GREEN



**Ref. No. 21513**

BLUE



# LAP COUNTER

The multifunctional PC 15.11 has all the essentials and counts not only calories but also the completed laps. Intervals can be viewed throughout training with the press of a button.

## Easy LapView



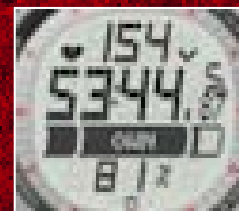
Quickly and easily view the lap times, even while training

## Training time/ target zone



Percentage of time spent within the zone

## Zone bar



Graphical display of the selected zone with % display of the HRmax

## Calorie counter



Calories burned displayed during training

# PC

## Ergonomics/fit



The fit and ergonomics have been fully tailored to women's narrower wrists

## Calorie counter



While training, even keep an eye on the calories burned

## Target zone



Always know whether you are in your target zone



# DIGITALLY CODED

Whether in the gym or on a group run, SIGMA's independently developed STS transmission system ensures that your heart rate is reliably transmitted.

## PC 22.13 WOMAN/MAN

### FEATURES

- ECG-accurate
- Digital coded transmission **STS**
- Easy to read display with large figures and pictograms
- Automated function for calculating the target zone
- One target zone
- Calorie Counter
- Backlit display
- Button lock
- Water resistant



Ref. No. 22131

PINK



Ref. No. 22133

GREEN



Ref. No. 22130

GRAY



Ref. No. 22132

GRAY

## FEATURES

- 4 heart rate functions (ECG-accurate)
- Digitally coded wireless transmission
- 6 time functions incl. countdown and alarm
- Training mode with 1 programmable HR zone
- Calorie counter
- Total values per week, month, since reset
- Memory for 1 training session
- Intuitive menu navigation
- ON/OFF battery compartment door
- Storage of pre-set values in case of battery change
- Backlit display
- Personalization by "My Name" function
- 5 languages
- Stopwatch
- Watertight

**PC 25.10**



**Ref. No. 28301**

GRAY



**Ref. No. 28302**

YELLOW

Stiftung  
Warentest

test



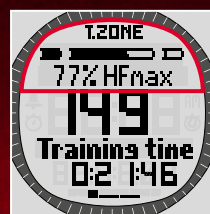
GUT (2,1)

Im Test:  
15 Pulsmess-  
geräte mit  
Brustgurt  
11 gut  
Ausgabe 4/2011

# DIGITALLY CODED

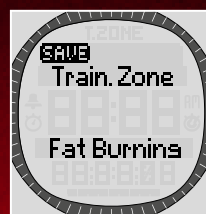
Easy to use and equipped with all basic functions, the ECG-accurate and coded heart rate monitor is suited for every recreational sportsperson who likes to train well and effectively.

## Training zone



The zone graphics show whether you are training in the desired range

## Training mode with one programmable HR zone



Two pre-programmed training zones and one individually set zone

## Memory menu



Memory for one training session

## Training LOG



Total value memory for a longterm training monitoring over weeks, months and a freely selected period

# PC

## TRAINING PARTNER

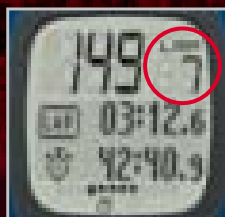
Attractive, functional, reliable, versatile, and of course, digitally encoded, the PC 26.14 is comfortable to wear for all forms of exercise.

### Intensity zones



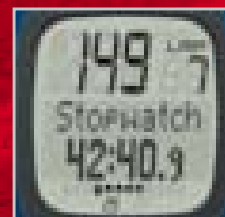
Users can train in four standardized or customized intensity zones. The display shows the frequency distribution and the current zone

### Lap counter



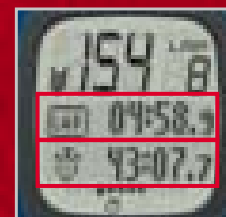
Up to 50 laps per training session can be recorded and viewed while still training

### Zoom function while training



While training, individual display values can be enlarged

### Favorites function



The bottom two lines on the up to nine different display views can be individually customized using the favorites function



PC 26.14

**NEW!**

DIGICODE



Ref. No. 22612

BLUE



Ref. No. 22610

BLACK



Ref. No. 22611

WHITE

## FEATURES

- ECG-accurate
- Digitally coded wireless transmission **STs**
- Current, average and maximum heart rate
- Lap counter (50 laps)
- BestLap indicator
- Easy LapView
- Calorie counter
- Intensity zones
- Zone indicator / zone alarm
- Zone bar showing the current heart rate as a percentage of the HRmax
- Automated function for calculating the target zone
- Favorites function
- Training with 1 adjustable target zone
- Zoom function
- Memory for 7 training sessions
- Total values per week, month, and since reset
- Alarm clock (daily, MON – FRI, one-time)
- Button lock
- Low battery indicator (watch and transmitter)
- Full text display with 5 available languages
- Backlit display
- Silicone wrist strap
- Mineral glass
- Battery compartment
- Watertight

## R3 COMFORTEX+

SOFT CLOTH CHEST BELT WITH LAMINATED ELECTRODES  
FOR RC 1209 AND RC 14.11



Ref. No. 20321



### R3 transmitter – all in one

One transmitter for measuring distance, speed and heart rate. Equipped with a 3-axis acceleration sensor for maximum accuracy. Just clip on to the chest belt. Ready.



The ECG accurate, digitally encoded chest belt with its completely textile composition ensures that it feels comfortable and fits perfectly. By the use of laminated electrodes, a slight humidification is adequate for a reliable heart rate measurement.



### Distance

Know how many kilometers you have covered wherever you are. While running in unknown terrain or unmarked paths one receives information about the covered distance.



### Speed

Always be on your way with the right speed. In addition to heart rate, another indicator for strain measurement.



### Heart rate

A control parameter for effort. Together with speed, a reliable partner for training progress: e.g. lower heart rate at an unchanged speed = better performance.



# SPEED AND DISTANCE

Trip distance, speed and heart rate values are important parameters for a runner. With the R3 Comfortex+ chest belt, SIGMA SPORT® enables the measuring of these three values in one device and without additional accessories.



Ref. No. 25102

BLACK

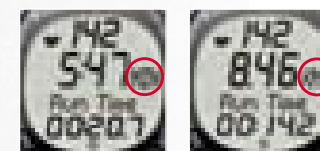
Ref. No. 25101

RED

DIGI-CODE

## FEATURES

- ECG-accurate
- Digitally coded wireless transmission **STS RUN**
- Current, average and maximum heart rate
- Current, average and maximum speed
- Speed measurement possible in min/km (min/mile) or km/h (mph)
- Distance in km
- ON/OFF battery compartment
- Training mode with 1 programmable HR zone
- Automated function for calculating the target zones
- Calorie counter
- Backlit display
- Storage of pre-set values during battery change
- Full text display with 5 available languages
- Watertight



## Speed or Pace View

- Speed measurement possible in min/km and km/h



soq.de 11/2010

01/2011

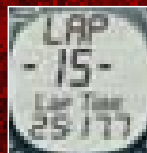
# RC

## PC/MAC ANALYSIS

Ambitious runners can store up to 99 laps with the RC 14.11.  
The individual training laps can be evaluated using the Easy LapView  
function on the watch or, thanks to the 90 h LOG capacity, on the PC.



*Ref. No. 20232*



### Docking Station Watch

Specially developed for SIGMA sports watches, the docking station allows quick and interference-free data transmission via USB

### Easy LapView Function

In addition to the intervals, the following values are also stored:

- Lap time
- Lap distance
- Average speed/pace
- Max. speed/pace
- Time since start
- Distance since start
- Average heart rate
- Max heart rate
- Calories



# RC 14.11

## FEATURES

- ECG-accurate
- Digitally coded wireless transmission **STS RUN**
- Current, average and maximum heart rate
- Current, average and maximum speed
- Distance in km
- Current and average speed comparison
- Lap counter (99 laps)
- Automated function for calculating the target zones
- Training mode with 1 programmable HR zone
- Calorie counter
- Audible and visual zone alarm
- Includes docking station watch and SIGMA DATA CENTER software
- PC interface
- ON/OFF battery compartment
- Low battery indicator (watch and transmitter)
- Backlit display
- Full text display with 5 available languages
- Watertight



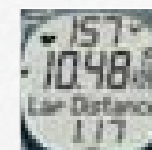
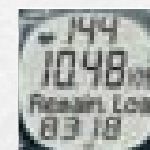
Ref. No. 21410

GRAY



Ref. No. 21411

YELLOW



## 90 h LOG capacity

- Up to 90 h LOG capacity depending on the selected interval: 5, 10, 20 or 30 sec.
- Remaining LOG time displayed

## Speed display

- Always know how fast and how far you are running
- Easy to switch between pace/speed, distance and stopwatch



04/2012



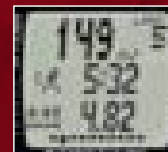
04/2012



soq.de 03/2012

# RC MOVE

## SMARTPHONE TRAINING



### Speed and distance

- In conjunction with the app, users receive information about their speed and distance while training



### Music control

- The iPhone's playlist can be controlled on the watch

# RUN *SMARTER*

When connected to an iPhone and the SIGMA MOVE app via Bluetooth® SMART, the RC MOVE becomes a multifunctional training device.



Ref. No. 22811

WHITE



**GPS**  
SPEED  
DISTANCE

**HRM**  
BLUETOOTH  
WIRELESS

**LAP**  
COUNT

**TRAINING**  
**DATA**  
ANALYSIS

**VOICE**  
COACH

**MUSIC**  
CONTROL



## SIGMA *MOVE* SPORT APP

The SIGMA iPhone app can accompany almost any form of sporting activity. Users can select their own point of focus, whether heart rate, speed and distance or simply the route. The training session can be tracked on the display, graphically analyzed, and shared with friends via Facebook and Twitter. Together with the R1 BLUE COMFORTX+ heart rate chest belt from SIGMA SPORT, this app (for iPhone 4S and above) is the ideal training partner.

It has a clear structure and is simple and intuitive to use. The desired sport can be selected with a single tap. The ability to quickly and easily switch between three different display configurations also makes it possible to monitor training sessions on the basis of different parameters.

The SIGMA MOVE app can be downloaded free of charge from the Apple App Store and is available in German, English, Spanish, Italian, French and Dutch.

[www.sigma-move.com](http://www.sigma-move.com)

\* Only in conjunction with the free SIGMA MOVE app \*\* Available with SIGMA R1 BLUE COMFORTX+



## FEATURES

- ECG-accurate
- Digitally encoded wireless transmission using Bluetooth® SMART
- Compatible with SIGMA MOVE
- Speed / distance indication \*
- Music Control \*
- Voice Coach \*
- Configurable phase training using the DATA CENTER or SIGMA MOVE
- Current, average and maximum heart rate
- Lap counter (99 laps)
- Training with 1 adjustable target zone
- Interval training configurable
- Favorites function
- BestLap indicator
- Easy LapView
- Calorie counter
- Intensity zones
- Heart rate graph while training
- Zone alarm / Zone indicator
- Zone bar showing the current heart rate as a percentage of the HRmax
- Automated function for calculating the target zone
- Zoom function
- 260 h log capacity
- Total values per week, month, and since reset
- Alarm clock (daily, MON – FRI, one-time)
- MyName function (only via DATA CENTER)
- Button lock
- Low battery indicator (watch and transmitter)
- Full text display with 5 available languages
- Backlit display
- Silicone wrist strap
- Wireless data transmission via the SIGMA WIRELESS DONGLE
- Battery compartment
- Watertight

# RC MOVE

## THE PERFECT TRAINING PARTNER FOR AMBITIOUS RUNNERS



Ref. No. 22810

BLACK

**NEW!**



Ref. No. 22811

WHITE

The complete package includes:  
R1 BLUE COMFORTX+,  
SIGMA WIRELESS DONGLE,  
DATA CENTER



### SIGMA Wireless Dongle

- Thanks to the SIGMA wireless dongle, the RC MOVE can be connected to the DATA CENTER via a PC / Mac / Android tablet \*\*.



### Phase training

- The detailed phase training is prepared in the DATA CENTER and transmitted to the RC MOVE via the dongle.



### Interval training

- Simple interval training sessions can be directly programmed in the RC MOVE.

## R1 BLUE COMFORTEX+

### FEATURES

- **Compatible iOS devices:**  
iPhone (from 4S), iPod touch (from 5th generation), iPad (from 3rd generation), iPad mini and iPod Nano (from 7th generation), as at June 2014
- **Compatible Android devices:**  
All devices with Bluetooth® SMART READY technology and Android OS 4.3
- Transmits the following up-to-date values to devices with Bluetooth® SMART READY technology\*:
  - ECG-accurate heart rate
  - RR intervals in milliseconds for determining the heart rate variability
  - Battery status
- Battery life over 1.3 years\*\*
- Battery compartment door
- Waterproof to 3 ATM
- Ultra-light, comfortable, well-fitting textile chest belt
- Laminated electrodes for better skin contact
- The textile chest belt can be washed on a hand wash cycle and in a wash bag at up to 30°C

SIGMA **MOVE**  
SPORTS APP



Ref. No. 20328



\* A 'Bluetooth® SMART READY' logo and/or an indication of an embedded Bluetooth® 4.0 module are required to communicate with Bluetooth® SMART devices. The operating system must also support Bluetooth® SMART READY technology. The latest Apple iOS, Mac OS, Windows 8, and Android 4.3 systems support Bluetooth® 4.0 technology. The latest Windows Phone 8 versions do not. As the operating systems undergo continual development, all technical details are subject to change. To use all the information provided by the R1 BLUE, this has to be supported by the application (e.g. a sports app). As development is continually ongoing, all details are subject to change. A list of devices that currently support Bluetooth® SMART READY technology can be found on the following website: [www.bluetooth.com](http://www.bluetooth.com) (as at June 2014).

\*\* With a one second transmission interval (default setting) and one hour of use per day.

SC 6.12  
PC 3.11  
PC 10.11  
PC 15.11  
PC 22.13  
PC 25.10  
PC 26.14  
RC 1209  
RC 14.11  
RC MOVE

SC 6.12  
PC 3.11  
PC 10.11  
PC 15.11  
PC 22.13  
PC 25.10  
PC 26.14  
RC 1209  
RC 14.11  
RC MOVE

SC 6.12  
PC 3.11  
PC 10.11  
PC 15.11  
PC 22.13  
PC 25.10  
PC 26.14  
RC 1209  
RC 14.11  
RC MOVE

### Digitally coded wireless transmission (heart rate)

### Digitally coded transmission STS RUN (heart rate, speed and distance)

### Digitally encoded wireless transmission using Bluetooth® SMART

### Basic functions

- ECG-accurate
- Clock
- Date
- Wake-up alarm
- Countdown
- Button tone on/off
- 5 languages (DE, GB, FR, IT, ES)
- Backlit display

### Training display

- Heart rate
- Average heart rate
- Maximum heart rate
- Minimum heart rate
- % of the max. HR with zone bar
- Training time within the training zone
- Intensity zones
- Calorie counter
- Stopwatch
- Clock
- Zone indicator
- Lap counter
- Lap time
- Lap distance

- Current speed
- Average speed
- Current and average speed comparison
- Maximum speed
- Distance
- Total training time <sup>2</sup>
- Total calories <sup>2</sup>
- Total distance <sup>2</sup>
- Remaining LOG time

### Training functions

- Calculation of maximum heart rate
- Automatic training zones (Fit or Fat)
- Manually programmable zones
- Audible zone alarm
- Target zones can be changed while training

### Easy LapView/Lap memory

- Time/lap
- Time since start
- Average heart rate/lap
- Maximum heart rate/lap
- Minimum heart rate/lap
- Training time in the target zone/lap
- Calories/lap
- Distance/lap
- Average speed/lap
- Maximum speed/lap
- Best lap indicator
- Distance since start

### Other features

- R3 COMFORTX+ chest belt incl.
- Docking station
- DATA CENTER software incl.
- R1 BLUE COMFORTX+ textile chest belt including SIGMA WIRELESS DONGLE and DATA CENTER software
- Battery compartment
- Storage of pre-set values during battery change
- Battery status display (watch)
- Battery status display (transmitter)
- Watertight
- Number of training sessions
- Max. number of stored laps per unit
- Maximum logging time in h

7	1	1	1	1	7	1	1	Log <sup>5</sup>
99		50		50		99	99	
							90	260

SUMMARY  
OF FUNCTIONS

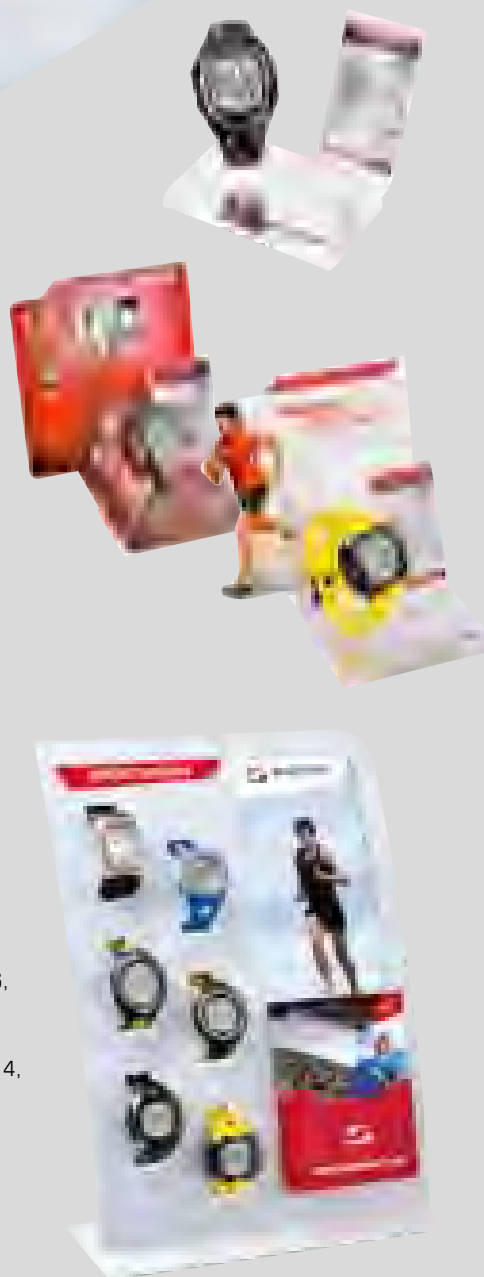
# SUPPORT



## UFSB

**Ref. No. 00104**

- Compatible with all bike computer models from TOPLINE 2006, 2009 and 2012 (wired and wireless), all ROX models with the exception of the ROX 10.0 GPS, heart rate monitors and running watches (ONYX series, PC 22.13, PC 25.10, PC 26.14, and RC with the exception of the RC MOVE)
- Programming in seconds
- Simulate training without a chest belt
- Quick, simple and effective, upgradeable with PC (compatible with new HRMs)



## WATCH DISPLAY STAND

**Ideal for Product Display within Cases**

**Ref. No. 20214**

*Unequipped*

- Dimensions: 100 x 100 x 75 mm
- Includes right-hand bracket for the product description (available for all products)
- SIGMA printed logo

## INSERT RUNNING COMPUTERS AND STOPWATCHES

**FOR WATCH DISPLAY STAND**

**Ideal for Running Computer and Stopwatch display**

**Running Computer: Ref. No. 905315**

*Unequipped*

**Stopwatch: Ref. No. 905323**

*Unequipped*

## COUNTER DISPLAY

**The interactive Counter Top Display for your Shop**

**Ref. No. 907090**

*Unequipped*

With the practical HRM display you can achieve the customers attention very easily. The customer has the possibility to gain personal impression about function, usage and performance.

- Includes brochure holder
- Replaceable graphic element
- Dimensions: 258 x 420 x 120 mm



**20303**

**CHEST BELT ANALOG**

- Analog
- Transmitter incl. elastic strap



**20311**

**ELASTIC BELT**

- Suitable for 20303 and 20319



**20315**

**ELASTIC BELT FOR CHEST BELT STS**

- Single elastic strap
- Compatible with chest belt STS (20330)



**20319**

**CHEST BELT PC 25.10**

- Digitally coded
- Transmitter incl. elastic belt



**20318**

**ELASTIC STRAP COMFORTX+  
TEXTILE CHEST BELT**

- Single COMFORTX+ (without transmitter)
- Compatible only with R3 and R1 transmitter



**20320**

**R3 TRANSMITTER**

- Single R3 transmitter
- For HR, speed and distance
- Only for running computers



**20330**

**CHEST BELT STS**

- Digitally coded
- Transmitter incl. elastic strap
- Compatible with PC 22.13 and PC 26.14



**20321**

**R3 COMFORTX+  
TEXTILE CHEST BELT**

- Textile chest belt incl. R3 transmitter
- Hip Clip



**20232**

**DOCKING STATION WATCH**

- Data transfer via USB
- Only for RC 14.11



**20304**

**STEM MOUNT BRACKET**

- Suitable for all common handlebar diameters
- Suitable for all heart rate monitors and running watches (except PC 3.11)



**20326**

**R1 STS TRANSMITTER**

- Single R1 STS transmitter
- Compatible with PC 22.13 and PC 26.14



**20324**

**R1 STS COMFORTX+  
TEXTILE CHEST BELT**

- Textile chest belt incl. R1 transmitter
- Compatible with PC 22.13 and PC 26.14



**00342**

**BATTERY FOR PC**

- CR 2032
- Suitable for all heart rate monitors from 2003 and chest belts



**20316**

**BATTERY FOR R3 TRANSMITTER**

- CR 2450
- Suitable only for R3 transmitter



**00349**

**POWER PACKET**

- Suitable for all heart rate monitors from 2003 and chest belts
- 10 pcs. CR 2032



**00104**

**UFSB**

- Training simulator
- Compatible with all bike computer models from TOPLINE 2006, 2009 and 2012 (wired and wireless), all ROX models with the exception of the ROX 10.0 GPS, heart rate monitors and running watches (ONYX series, PC 22.13, PC 25.10, PC 26.14, and RC with the exception of the RC MOVE)
- Software update available free of charge at: [www.ufsb.sigmasport.com](http://www.ufsb.sigmasport.com)



**20328**

**R1 BLUE COMFORTX+  
TEXTILE CHEST BELT**

- Textile chest belt incl. R1 BLUE transmitter



**20329**

**R1 BLUE TRANSMITTER**

- Single R1 BLUE transmitter



## FEATURES

- Dimensions: 9.5 x 3.8 x 3.8 cm
- Weight: 200 g / 260 g
- Tire levers, 2 pcs.
- Spoke wrench – 3 nipple sizes
- 2/2,5/3/4/5/6/8 mm hex key
- 8/10/15 mm box wrench
- 2 screwdrivers – Phillips and flat head
- Possible to vertically divide into two by pressing one button
- Housing and grips are made of shock and dirt resistant materials

### Additional with PT 16

- Chain retainer
- Chain rivet tool



PT 14  
Ref. No. 61001



PT 16  
Ref. No. 62001

PT 14/PT 16

POCKET TOOLS

# SIGMA DATA CENTER

*Now available for tablet*

## TRAINING SOFTWARE ALWAYS AVAILABLE WHEREVER YOU ARE

The SIGMA DATA CENTER software from SIGMA SPORT enables users to systematically evaluate training session statistics recorded using the TOPLINE 2009 and 2012, ROX series devices, the RC 14.11 running computer, and the RC MOVE on PCs and Macs.

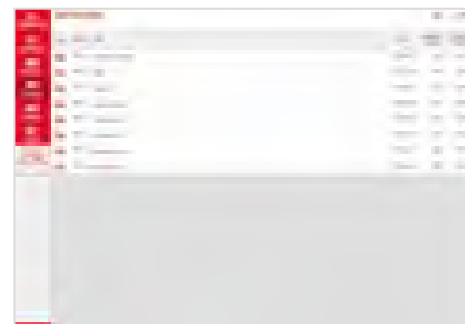
The new SIGMA DATA CENTER now impresses with tablet and cloud compatibility – making it possible to evaluate and analyze training sessions as well as to plan trips for the ROX 10.0 GPS wherever you are.

### DASHBOARD



The DATA CENTER dashboard has been completely redesigned and now provides a quick overview on computers and tablets. Connected devices and new training sessions are instantly displayed.

### ACTIVITIES



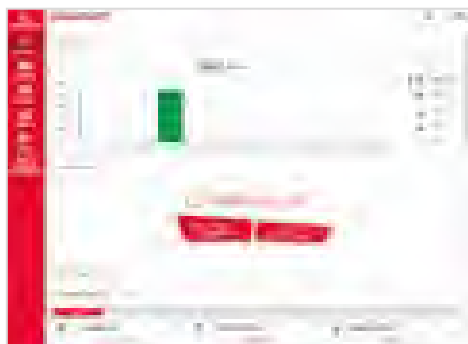
The 'Activity Feed' chronologically lists the most recent training sessions (per sport type). Each sport type can be assigned a different color. The main data for the training session is displayed.

## LOG VIEW



The log view has also be completely revised and the various training values are now grouped by topic.

## SIGMA CLOUD\*



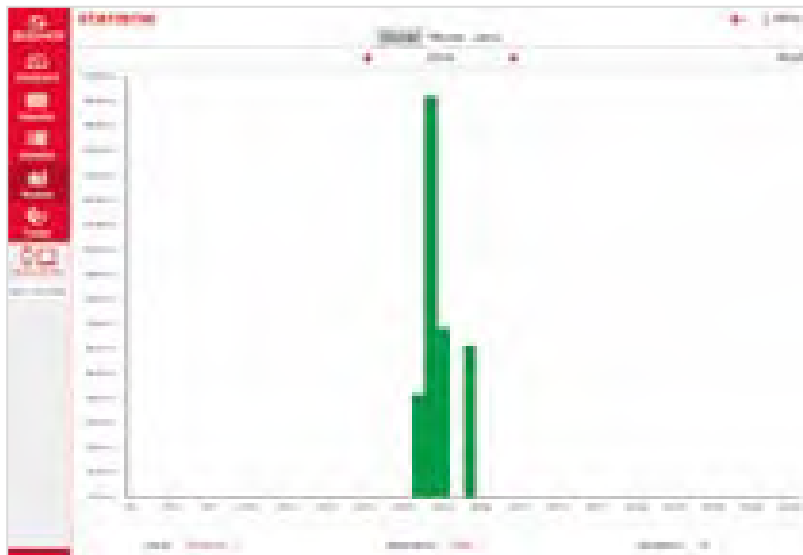
Users can optionally register for the SIGMA CLOUD. As soon as an internet connection is established with the computer or tablet, all DATA CENTER data is synchronized.

\*Cloud available from the end of 2014

A man and a woman, both wearing cycling helmets and jerseys, are sitting at a wooden table outdoors. They are looking at a laptop screen which displays a data visualization, possibly a performance dashboard. The background shows a scenic mountain landscape under a cloudy sky. The man is on the left, wearing a red jersey, and the woman is on the right, wearing a blue jersey. The laptop screen shows a grid of data with various icons and charts.

# ***DATA CENTER FUNCTIONS***

## STATISTICAL EVALUATION



Systemization by sport types and people. The data display and statistical evaluation now occur on the basis of sport types and people.

## DATA CENTER Features

- Individual memory evaluation
- Comparison of 2 individual memories
- Summary of total values
- Low battery indicator
- Statistical evaluation
- Calendar function
- Displaying the trip cycled in graph format
- Comparison of two LOGs
- Intensity zone distribution
- Start altitude correction available
- Sub-area evaluation
- Deletion of LOG sections/parts of the LOG
- Plan phase training
- Send route to device
- Update firmware using Data Center
- Upload to Strava
- Note function
- Print all evaluations
- SIGMA CLOUD

## DATA CENTER Software

- DATA CENTER PC / Mac
- DATA CENTER App

TOPLINE 2012\*

ROX 5.0\*

ROX 6.0 /  
CAD\*ROX 10.0 GPS  
WITHOUT TRANSMITTERROX 10.0 GPS  
WITH TRANSMITTER

RC 14.11

RC MOVE

50% off voucher	50% off voucher	50% off voucher			
Available subject to a charge from the Google Play Store or Apple App Store					

\* The DATA CENTER and docking station do not come with the product.

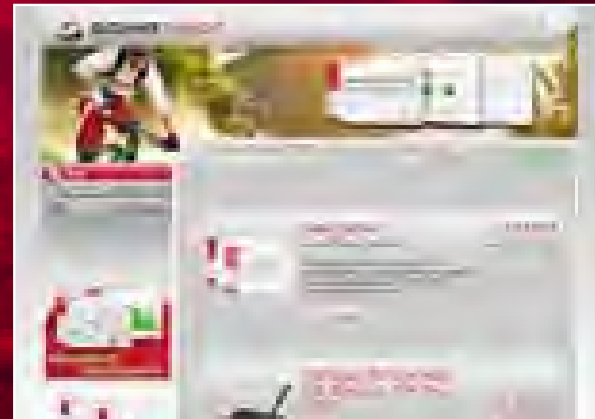
# SIGMA ONLINE

[www.sigmasport.com](http://www.sigmasport.com)



Website

[www.sigmasport.com](http://www.sigmasport.com)



DATA CENTER Shop

[www.sigma-data-center.com](http://www.sigma-data-center.com)



# MICROSITES

[www.sigma-topline2012.com](http://www.sigma-topline2012.com)

[www.sigma-rox.com](http://www.sigma-rox.com)

[www.sigma-evo-lights.com](http://www.sigma-evo-lights.com)

[www.sigma-run.com](http://www.sigma-run.com)



## Microsite TOPLINE 2012

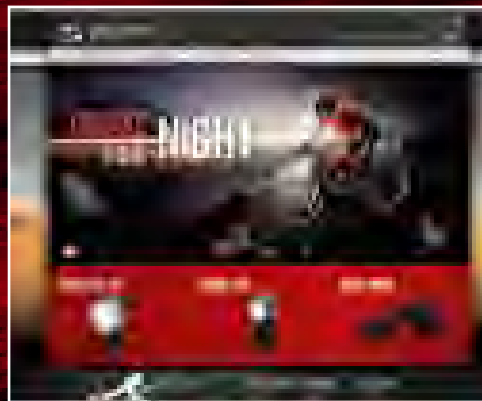
A specially designated website for the Topline range from SIGMA SPORT® with videos, flash animations, and everything you need to know about the products.



Microsite ROX



Microsite RUNNING COMPUTERS



Microsite POWER LIGHTS

# *www.sigmasport.com*

**BIKE COMPUTERS / LIGHTING SYSTEMS / SPORT WATCHES**



YouTube  BLOG 

## **SIGMA-ELEKTRO GmbH**

Dr.-Julius-Leber-Straße 15  
D-67433 Neustadt/Weinstraße  
Tel. + 49 (0) 63 21-9120-0  
Fax + 49 (0) 63 21-9120-34  
E-Mail: [info@sigmasport.com](mailto:info@sigmasport.com)

## **SIGMA SPORT USA**

North America  
3487 Swenson Ave.  
St. Charles, IL 60174, U.S.A.  
Tel. + 1 630-761-1106  
Fax + 1 630-761-1107

## **SIGMA SPORT ASIA**

Asia, Australia, South America, Africa  
4F, No.192, Zhonggong 2<sup>nd</sup> Rd.,  
Xitun Dist., Taichung City 407, Taiwan  
Tel. + 886-4-2358 3070  
Fax + 886-4-2358 7830

 **SIGMA**<sup>®</sup>  
GERMANY

[www.sigmasport.com](http://www.sigmasport.com)